

RecomAb™

CD38 recombinant monoclonal antibody, clone AT13/5

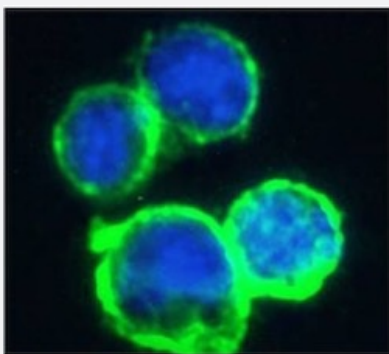
Catalog # RAB03245 Size 200 ug

Applications



Western Blot

Western blot analysis of human spleen lysate with CD38 recombinant monoclonal antibody, clone AT13/5 (Cat # RAB03245).



Immunofluorescence

Immunofluorescent staining of Daudi cells with CD38 recombinant monoclonal antibody, clone AT13/5 (Cat # RAB03245).

Immunofluorescence analysis of paraformaldehyde fixed Daudi cells on Shi-fix™ coverslips- permeabilized with 0.15% Triton and stained with the chimeric r version of RAB03245 at 10 ug/ml for 1h followed by Alexa Fluor® 488 secondary antibody (1 ug/ml)- showing membrane staining. The nuclear stain is DAPI (blue). The isotype control was stained with an anti-Fluorescein antibody (0) followed by Alexa Fluor® 488 secondary antibody.

Specification

Product Description	Rabbit recombinant monoclonal antibody raised against human CD38.
Antibody Species	Rabbit
Immunogen	Original antibody is raised against namalwa cells emulsified in CFA.
Reactivity	Human
Form	Liquid

Isotype	IgG
Recommend Usage	Flow Cytometry Immunofluorescence Western Blot The optimal working dilution should be determined by the end user.
Storage Buffer	In PBS with 0.02% Proclin 300
Storage Instruction	Store at 4°C for up to 3 months. For longer storage, aliquot and store at -20°C. Aliquot to avoid repeated freezing and thawing.

Applications

- Western Blot

Western blot analysis of human spleen lysate with CD38 recombinant monoclonal antibody, clone AT13/5 (Cat # RAB03245).

- Immunofluorescence

Immunofluorescent staining of Daudi cells with CD38 recombinant monoclonal antibody, clone AT13/5 (Cat # RAB03245). Immunofluorescence analysis of paraformaldehyde fixed Daudi cells on Shi-fix™ coverslips- permewith 0.15% Triton and stained with the chimeric r version of RAB03245 at 10 ug/ml for 1h followed by Alexa Fluor® 488 secondary antibody (1 ug/ml)- showing membrane staining. The nuclear stain is DAPI (blue). The isotype control was stained with an anti-Fluorescein antibody (0) followed by Alexa Fluor® 488 secondary antibody.

- Flow Cytometry

Gene Info — CD38

Entrez GeneID	952
Gene Name	CD38
Gene Alias	T10
Gene Description	CD38 molecule
Omim ID	107270
Gene Ontology	Hyperlink
Gene Summary	CD38 is a novel multifunctional ectoenzyme widely expressed in cells and tissues especially in leukocytes. CD38 also functions in cell adhesion,signal transduction and calcium signaling. [provided by RefSeq]

Other Designations

ADP-ribosyl cyclase/cyclic ADP-ribose hydrolase|CD38 antigen|CD38 antigen (p45)|cyclic ADP-ribose hydrolase

Pathway

- [Calcium signaling pathway](#)
- [Hematopoietic cell lineage](#)
- [Metabolic pathways](#)
- [Nicotinate and nicotinamide metabolism](#)

Disease

- [Cell Transformation](#)
- [Child Development Disorders](#)
- [Diabetes Mellitus](#)
- [Genetic Predisposition to Disease](#)
- [Leukemia](#)
- [Lupus Erythematosus](#)
- [Lymphoma](#)
- [Osteoporosis](#)