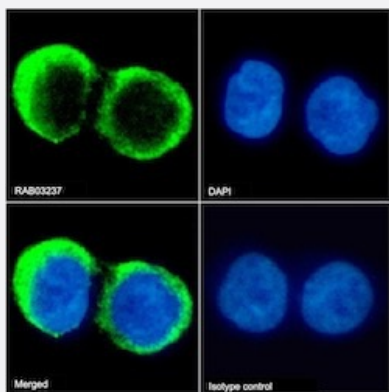


RecomAb™

# CD37 recombinant monoclonal antibody, clone G28-1

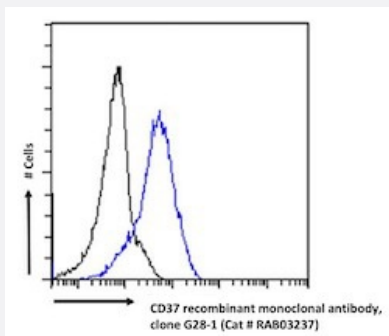
Catalog # RAB03237      Size 200 ug

## Applications



### Immunofluorescence

Immunofluorescent staining of Daudi cells with CD37 recombinant monoclonal antibody, clone G28-1 (Cat # RAB03237). Immunofluorescence analysis of paraformaldehyde fixed Daudi cells on Shi-fix™ coverslips stained with the chimeric r version of RAB03237 at 10 ug/ml for 1h followed by Alexa Fluor® 488 secondary antibody (2 ug/ml)- showing membrane staining. The nuclear stain is DAPI (blue). Panels show from left-right- top-bottom RAB03237- DAPI- merged channels and an isotype control. The isotype control was an unknown specificity antibody (.1) followed by staining with Alexa Fluor® 488 secondary antibody.



### Flow Cytometry

Flow cytometric analysis of Daudi cells with CD37 recombinant monoclonal antibody, clone G28-1 (Cat # RAB03237). Daudi cells were stained with anti-unknown specificity antibody (3.0; isotype control- black line) or the r version of RAB03237 (blue line) at a dilution of 1:100 for 1h at RT. After washing- the bound antibody was detected using a goat anti-r AlexaFluor® 488 antibody at a dilution of 1:1000 and cells analyzed using a FACSCanto flow-cytometer.

## Specification

Product Description	Rabbit recombinant monoclonal antibody raised against human CD37.
Antibody Species	Rabbit
Immunogen	Original antibody is raised against recombinant protein corresponding to human CD37.
Reactivity	Human

Form	Liquid
Isotype	IgG
Recommend Usage	Flow Cytometry Immunofluorescence The optimal working dilution should be determined by the end user.
Storage Buffer	In PBS with 0.02% Proclin 300
Storage Instruction	Store at 4°C for up to 3 months. For longer storage, aliquot and store at -20°C. Aliquot to avoid repeated freezing and thawing.

## Applications

- Immunofluorescence

Immunofluorescent staining of Daudi cells with CD37 recombinant monoclonal antibody, clone G28-1 (Cat # RAB03237). Immunofluorescence analysis of paraformaldehyde fixed Daudi cells on Shi-fix™ coverslips stained with the chimeric r version of RAB03237 at 10 ug/ml for 1h followed by Alexa Fluor® 488 secondary antibody (2 ug/ml)- showing membrane staining. The nuclear stain is DAPI (blue). Panels show from left-right- top-bottom RAB03237- DAPI- merged channels and an isotype control. The isotype control was an unknown specificity antibody (.1) followed by staining with Alexa Fluor® 488 secondary antibody.

- Flow Cytometry

Flow cytometric analysis of Daudi cells with CD37 recombinant monoclonal antibody, clone G28-1 (Cat # RAB03237). Daudi cells were stained with anti-unknown specificity antibody (3.0; isotype control- black line) or the r version of RAB03237 (blue line) at a dilution of 1:100 for 1h at RT. After washing- the bound antibody was detected using a goat anti-r AlexaFluor® 488 antibody at a dilution of 1:1000 and cells analyzed using a FACSCanto flow-cytometer.

## Gene Info — CD37

Entrez GeneID	<a href="#">951</a>
Gene Name	CD37
Gene Alias	GP52-40, MGC120234, TSPAN26
Gene Description	CD37 molecule
Omim ID	<a href="#">151523</a>
Gene Ontology	<a href="#">Hyperlink</a>

**Gene Summary**

The protein encoded by this gene is a member of the transmembrane 4 superfamily, also known as the tetraspanin family. Most of these members are cell-surface proteins that are characterized by the presence of four hydrophobic domains. The proteins mediate signal transduction events that play a role in the regulation of cell development, activation, growth and motility. This encoded protein is a cell surface glycoprotein that is known to complex with integrins and other transmembrane 4 superfamily proteins. It may play a role in T-cell-B-cell interactions. Alternate splicing results in multiple transcript variants encoding different isoforms. [provided by RefSeq]

**Other Designations**

CD37 antigen|cell differentiation antigen 37|leukocyte surface antigen CD37|tetraspanin-26

**Pathway**

- [Hematopoietic cell lineage](#)

**Disease**

- [Cardiovascular Diseases](#)
- [Diabetes Mellitus](#)
- [Edema](#)