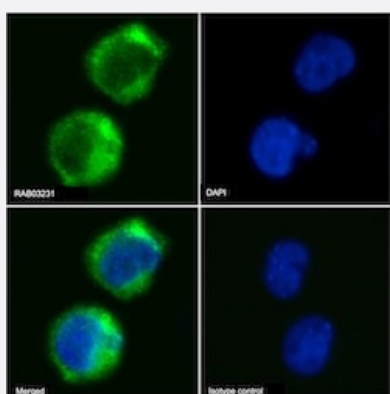


RecomAb™

CR1 recombinant monoclonal antibody, clone HB-8592

Catalog # RAB03231 Size 200 ug

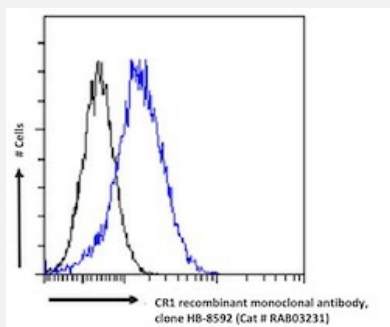
Applications



Immunofluorescence

Immunofluorescent staining of Jurkat cells with CR1 recombinant monoclonal antibody, clone HB-8592 (Cat # RAB03231).

Immunofluorescence analysis of paraformaldehyde fixed Jurkat cells immobilized on Shi-fix™ cover-slips and stained with the chimeric r version of RAB03231 at 10 ug/ml followed by Alexa Fluor® 488 secondary antibody (2 ug/ml)- showing membrane staining. The nuclear stain is DAPI (blue). Panels show from left-right- top-bottom RAB03231- DAPI- merged channels and an isotype control. The isotype control was stained with anti-Fluorescein antibody (3.0) followed by Alexa Fluor® 488 secondary antibody.



Flow Cytometry

Flow cytometric analysis of Jurkat cells with CR1 recombinant monoclonal antibody, clone HB-8592 (Cat # RAB03231).

Jurkat cells were fixed using 2% PFA- permeusing 0.5% Triton and stained with anti-Fluorescein IgG antibody (4-4-20; isotype control- black line) or the r1 version of RAB03231 (blue line) at a dilution of 1:100 for 1h at RT. After washing- bound antibody was detected using a goat anti-mouse IgG AlexaFluor® 488 antibody at a dilution of 1:1000 and cells analyzed using a FACSCanto flow-cytometer.

Specification

Product Description	Rabbit recombinant monoclonal antibody raised against human CR1.
Antibody Species	Rabbit
Immunogen	Original antibody is raised against purified CR1 from human erythrocytes.

Reactivity	Human
Form	Liquid
Isotype	IgG
Recommend Usage	Flow Cytometry Immunofluorescence The optimal working dilution should be determined by the end user.
Storage Buffer	In PBS with 0.02% Proclin 300
Storage Instruction	Store at 4°C for up to 3 months. For longer storage, aliquot and store at -20°C. Aliquot to avoid repeated freezing and thawing.

Applications

● Immunofluorescence

Immunofluorescent staining of Jurkat cells with CR1 recombinant monoclonal antibody, clone HB-8592 (Cat # RAB03231). Immunofluorescence analysis of paraformaldehyde fixed Jurkat cells immobilized on Shi-fix™ cover-slips and stained with the chimeric r version of RAB03231 at 10 ug/ml followed by Alexa Fluor® 488 secondary antibody (2 ug/ml)- showing membrane staining. The nuclear stain is DAPI (blue). Panels show from left-right- top-bottom RAB03231- DAPI- merged channels and an isotype control. The isotype control was stained with anti-Fluorescein antibody (3.0) followed by Alexa Fluor® 488 secondary antibody.

● Flow Cytometry

Flow cytometric analysis of Jurkat cells with CR1 recombinant monoclonal antibody, clone HB-8592 (Cat # RAB03231). Jurkat cells were fixed using 2% PFA- permeusing 0.5% Triton and stained with anti-Fluorescein IgG antibody (4-4-20; isotype control- black line) or the r1 version of RAB03231 (blue line) at a dilution of 1:100 for 1h at RT. After washing- bound antibody was detected using a goat anti-mouse IgG AlexaFluor® 488 antibody at a dilution of 1:1000 and cells analyzed using a FACSCanto flow-cytometer.

Gene Info — CR1

Entrez GeneID	1378
Gene Name	CR1
Gene Alias	C3BR, CD35, KN
Gene Description	complement component (3b/4b) receptor 1 (Knops blood group)
Omim ID	120620 607486 611162
Gene Ontology	Hyperlink

Gene Summary

This gene is a member of the receptors of complement activation (RCA) family and is located in the 'cluster RCA' region of chromosome 1. The gene encodes a monomeric single-pass type I membrane glycoprotein found on erythrocytes, leukocytes, glomerular podocytes, and splenic follicular dendritic cells. The Knops blood group system is a system of antigens located on this protein. The protein mediates cellular binding to particles and immune complexes that have activated complement. Decreases in expression of this protein and/or mutations in its gene have been associated with gallbladder carcinomas, mesangiocapillary glomerulonephritis, systemic lupus erythematosus and sarcoidosis. Mutations in this gene have also been associated with a reduction in *Plasmodium falciparum* rosetting, conferring protection against severe malaria. Alternate allele-specific splice variants, encoding different isoforms, have been characterized. Additional allele-specific isoforms, including a secreted form, have been described but have not been fully characterized. [provided by RefSeq]

Other Designations

C3-binding protein|C3b/C4b receptor|CD35 antigen|Knops blood group antigen|complement component receptor 1|complement receptor 1

Pathway

- [Complement and coagulation cascades](#)
- [Hematopoietic cell lineage](#)

Disease

- [Adhesions](#)
- [Alzheimer Disease](#)
- [Autoimmune Diseases](#)
- [Cardiovascular Diseases](#)
- [Cognition Disorders](#)
- [Diabetes Complications](#)
- [Diabetes Mellitus](#)
- [Gallbladder Neoplasms](#)
- [Gallstones](#)
- [Genetic Predisposition to Disease](#)
- [Glomerulonephritis](#)
- [Hepatitis B](#)

- [HIV Infections](#)
- [Immune Complex Diseases](#)
- [Kidney Failure](#)
- [Liver Cirrhosis](#)
- [Lupus Erythematosus](#)
- [Lymphoma](#)
- [Macular Degeneration](#)
- [Maduromycosis](#)
- [Malaria](#)
- [Myocardial Infarction](#)
- [Neuropsychological Tests](#)
- [Pulmonary Fibrosis](#)
- [Sarcoidosis](#)
- [Tobacco Use Disorder](#)
- [Tuberculosis](#)