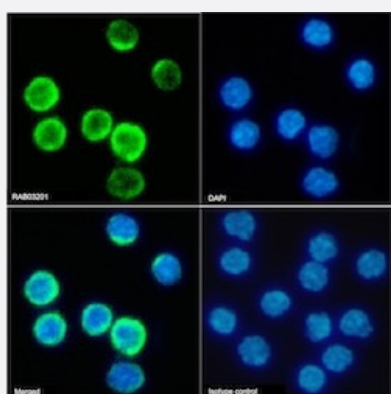


RecomAb™

Il2ra recombinant monoclonal antibody, clone PC-61.5.3

Catalog # RAB03201 Size 200 ug

Applications



Immunofluorescence

Immunofluorescent staining of mouse splenocytes with Il2ra recombinant monoclonal antibody, clone PC-61.5.3 (Cat # RAB03201).

Immunofluorescence analysis of paraformaldehyde fixed mouse splenocytes on Shi-fix™ coverslips stained with the chimeric r version of RAB03201 at 10 ug/ml for 1h followed by Alexa Fluor® 488 secondary antibody (2 ug/ml)- showing membrane staining. The nuclear stain is DAPI (blue). Panels show from left-right- top-bottom RAB03201- DAPI- merged channels and an isotype control. The isotype control was an unknown specificity antibody (.1) followed by staining with Alexa Fluor® 488 secondary antibody.

Specification

Product Description	Rabbit recombinant monoclonal antibody raised against mouse Il2ra.
Antibody Species	Rabbit
Immunogen	Original antibody is raised against the B6.1 mouse cytotoxic T cell line, followed by fusing spleen cells with P3X63Ag8.653 myeloma cells.
Reactivity	Mouse
Form	Liquid
Isotype	IgG

Recommend Usage

ELISA
Flow Cytometry
Functional Study
Immunofluorescence
Western Blot
The optimal working dilution should be determined by the end user.

Storage Buffer

In PBS with 0.02% Proclin 300

Storage Instruction

Store at 4°C for up to 3 months. For longer storage, aliquot and store at -20°C.
Aliquot to avoid repeated freezing and thawing.

Applications

- Western Blot
- Immunofluorescence

Immunofluorescent staining of mouse splenocytes with Il2ra recombinant monoclonal antibody, clone PC-61.5.3 (Cat # RAB03201).

Immunofluorescence analysis of paraformaldehyde fixed mouse splenocytes on Shi-fix™ coverslips stained with the chimeric r version of RAB03201 at 10 ug/ml for 1h followed by Alexa Fluor® 488 secondary antibody (2 ug/ml)- showing membrane staining. The nuclear stain is DAPI (blue). Panels show from left-right- top-bottom RAB03201- DAPI- merged channels and an isotype control. The isotype control was an unknown specificity antibody (.1) followed by staining with Alexa Fluor® 488 secondary antibody.

- Enzyme-linked Immunoabsorbent Assay
- Functional Study
- Flow Cytometry

Gene Info — Il2ra

Entrez GeneID

[16184](#)

Gene Name

Il2ra

Gene Alias

CD25, Il2r, Ly-43, MGC130561

Gene Description

interleukin 2 receptor, alpha chain

Gene Ontology

[Hyperlink](#)

Gene Summary

O

Other DesignationsIL-2R alpha chain|OTTMUSP00000012002|p55 chain
