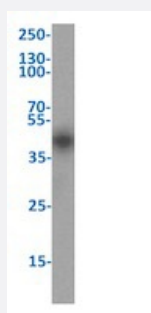


RecomAb™

Il2ra recombinant monoclonal antibody, clone 2E4

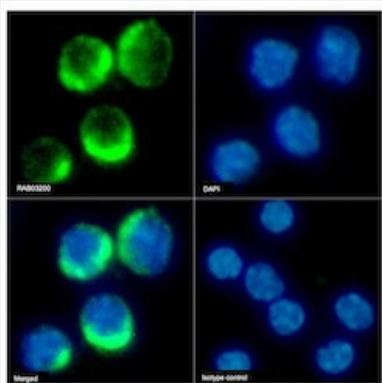
Catalog # RAB03200 Size 200 ug

Applications



Western Blot

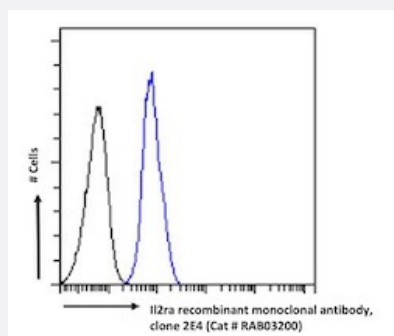
Western blot analysis of mouse lymph node tissue lysates with Il2ra recombinant monoclonal antibody, clone 2E4 (Cat # RAB03200).



Immunofluorescence

Immunofluorescent staining of mouse splenocytes with Il2ra recombinant monoclonal antibody, clone 2E4 (Cat # RAB03200).

Immunofluorescence analysis of paraformaldehyde fixed mouse splenocytes on Shi-fix™ cover-slips stained with the chimeric r version of RAB03200 (1:100 dilution) for 1h followed by Alexa Fluor® 488 secondary antibody (1:1000 dilution)- showing cytoplasmic staining. The nuclear stain is DAPI (blue). Panels show from left-right- top-bottom RAB03200- DAPI- merged channels and an isotype control. The isotype control was an unknown specificity antibody (3.0) followed by staining with Alexa Fluor® 488 secondary antibody.



Flow Cytometry

Flow cytometric analysis of mouse splenocytes with Il2ra recombinant monoclonal antibody, clone 2E4 (Cat # RAB03200).

Mouse splenocytes were stained with anti-unknown specificity antibody (3.0; isotype control- black line) or the r version of RAB03200 (blue line) at a dilution of 1:100 for 1h at RT. After washing- the bound antibody was detected using a goat anti-r AlexaFluor® 488 antibody at a dilution of 1:1000 and cells analyzed using a FACSCanto flow-cytometer.

Specification

Product Description	Rabbit recombinant monoclonal antibody raised against mouse Il2ra.
Antibody Species	Rabbit
Immunogen	Original antibody is raised against recombinant protein corresponding to mouse Il2ra.
Reactivity	Mouse
Form	Liquid
Isotype	IgG
Recommend Usage	Flow Cytometry Immunofluorescence Western Blot The optimal working dilution should be determined by the end user.
Storage Buffer	In PBS with 0.02% Proclin 300
Storage Instruction	Store at 4°C for up to 3 months. For longer storage, aliquot and store at -20°C. Aliquot to avoid repeated freezing and thawing.

Applications

• Western Blot

Western blot analysis of mouse lymph node tissue lysates with Il2ra recombinant monoclonal antibody, clone 2E4 (Cat # RAB03200).

• Immunofluorescence

Immunofluorescent staining of mouse splenocytes with Il2ra recombinant monoclonal antibody, clone 2E4 (Cat # RAB03200). Immunofluorescence analysis of paraformaldehyde fixed mouse splenocytes on Shi-fix™ cover-slips stained with the chimeric r version of RAB03200 (1:100 dilution) for 1h followed by Alexa Fluor® 488 secondary antibody (1:1000 dilution)- showing cytoplasmic staining. The nuclear stain is DAPI (blue). Panels show from left-right- top-bottom RAB03200- DAPI- merged channels and an isotype control. The isotype control was an unknown specificity antibody (3.0) followed by staining with Alexa Fluor® 488 secondary antibody.

• Flow Cytometry

Flow cytometric analysis of mouse splenocytes with Il2ra recombinant monoclonal antibody, clone 2E4 (Cat # RAB03200). Mouse splenocytes were stained with anti-unknown specificity antibody (3.0; isotype control- black line) or the r version of RAB03200 (blue line) at a dilution of 1:100 for 1h at RT. After washing- the bound antibody was detected using a goat anti-r AlexaFluor® 488 antibody at a dilution of 1:1000 and cells analyzed using a FACSCanto flow-cytometer.

Gene Info — Il2ra

Entrez GeneID	16184
Gene Name	Il2ra
Gene Alias	CD25, Il2r, Ly-43, MGC130561
Gene Description	interleukin 2 receptor, alpha chain
Gene Ontology	Hyperlink
Gene Summary	O
Other Designations	IL-2R alpha chain OTTMUSP00000012002 p55 chain