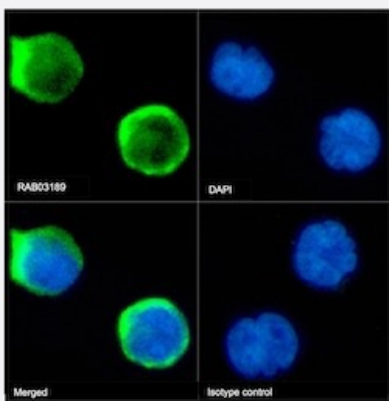


RecomAb™

CD1A recombinant monoclonal antibody, clone CBT6

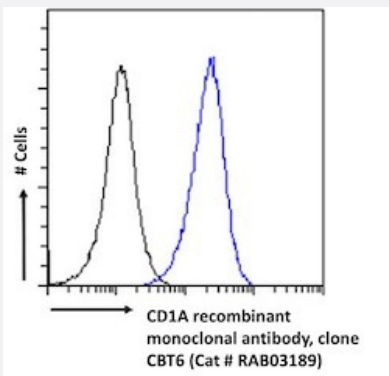
Catalog # RAB03189 Size 200 ug

Applications



Immunofluorescence

Immunofluorescent staining of Jurkat cells with CD1A recombinant monoclonal antibody, clone CBT6 (Cat # RAB03189). Immunofluorescence analysis of paraformaldehyde fixed Jurkat cells on Shi-fix™ coverslips stained with the chimeric r version of RAB03189 at 10 ug/ml for 1h followed by Alexa Fluor® 488 secondary antibody (2 ug/ml)- showing membrane staining. The nuclear stain is DAPI (blue). Panels show from left-right- top-bottom RAB03189- DAPI- merged channels and an isotype control. The isotype control was an unknown specificity antibody (3.0) followed by staining with Alexa Fluor® 488 secondary antibody.



Flow Cytometry

Flow cytometric analysis of Molt4 cells with CD1A recombinant monoclonal antibody, clone CBT6 (Cat # RAB03189). Molt4 cells were fixed using 2% PFA and stained with anti-unknown specificity antibody (3.0; isotype control- black line) or the r1 version of RAB03189 (blue line) at a dilution of 1:100 for 1h at RT. After washing- the bound antibody was detected using a goat anti-r AlexaFluor® 488 antibody at a dilution of 1:1000 and cells analyzed using a FACSCanto flow-cytometer.

Specification

Product Description	Rabbit recombinant monoclonal antibody raised against human CD1A.
Antibody Species	Rabbit
Immunogen	Original antibody is raised against human CD1A.
Reactivity	Human

Form	Liquid
Isotype	IgG
Recommend Usage	ELISA Flow Cytometry Immunofluorescence Immunohistochemistry Immunoprecipitation The optimal working dilution should be determined by the end user.
Storage Buffer	In PBS with 0.02% Proclin 300
Storage Instruction	Store at 4°C for up to 3 months. For longer storage, aliquot and store at -20°C. Aliquot to avoid repeated freezing and thawing.

Applications

- Immunohistochemistry

- Immunofluorescence

Immunofluorescent staining of Jurkat cells with CD1A recombinant monoclonal antibody, clone CBT6 (Cat # RAB03189). Immunofluorescence analysis of paraformaldehyde fixed Jurkat cells on Shi-fix™ coverslips stained with the chimeric r version of RAB03189 at 10 ug/ml for 1h followed by Alexa Fluor® 488 secondary antibody (2 ug/ml)- showing membrane staining. The nuclear stain is DAPI (blue). Panels show from left-right- top-bottom RAB03189- DAPI- merged channels and an isotype control. The isotype control was an unknown specificity antibody (3.0) followed by staining with Alexa Fluor® 488 secondary antibody.

- Immunoprecipitation

- Enzyme-linked Immunoabsorbent Assay

- Flow Cytometry

Flow cytometric analysis of Molt4 cells with CD1A recombinant monoclonal antibody, clone CBT6 (Cat # RAB03189). Molt4 cells were fixed using 2% PFA and stained with anti-unknown specificity antibody (3.0; isotype control- black line) or the r1 version of RAB03189 (blue line) at a dilution of 1:100 for 1h at RT. After washing- the bound antibody was detected using a goat anti-r AlexaFluor® 488 antibody at a dilution of 1:1000 and cells analyzed using a FACSCanto flow-cytometer.

Gene Info — CD1A

Entrez GeneID	909
Gene Name	CD1A
Gene Alias	CD1, FCB6, HTA1, R4, T6

Gene Description	CD1a molecule
Omim ID	188370
Gene Ontology	Hyperlink
Gene Summary	<p>This gene encodes a member of the CD1 family of transmembrane glycoproteins, which are structurally related to the major histocompatibility complex (MHC) proteins and form heterodimers with beta-2-microglobulin. The CD1 proteins mediate the presentation of primarily lipid and glycolipid antigens of self or microbial origin to T cells. The human genome contains five CD1 family genes organized in a cluster on chromosome 1. The CD1 family members are thought to differ in their cellular localization and specificity for particular lipid ligands. The protein encoded by this gene localizes to the plasma membrane and to recycling vesicles of the early endocytic system. Alternatively spliced transcript variants have been observed, but their biological validity has not been determined. [provided by RefSeq]</p>
Other Designations	CD1A antigen CD1A antigen, a polypeptide OTTHUMP00000018907 T-cell surface antigen T6/L eu-6 T-cell surface glycoprotein CD1a cluster of differentiation 1 A cortical thymocyte antigen CD1 A differentiation antigen CD1-alpha-3 epidermal dendritic cell marker

Pathway

- [Hematopoietic cell lineage](#)

Disease

- [Campylobacter Infections](#)
- [Genetic Predisposition to Disease](#)
- [Guillain-Barre Syndrome](#)
- [Lung Diseases](#)
- [Mycobacterium Infections](#)
- [Polyradiculoneuropathy](#)