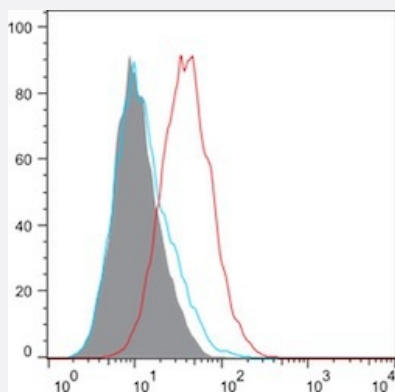


## RecomAb™

# Siglec1 recombinant monoclonal antibody, clone 3D6.112 (recombinant version)

Catalog # RAB03171      Size 100 ug

## Applications



### Flow Cytometry

Flow cytometric analysis of murine macrophages with Siglec1 recombinant monoclonal antibody, clone 3D6.112 (Cat # RAB03171).

Murine bone marrow-derived macrophages (BMDMs) were stained with RAB03171 (as well as isotype control) and bound antibody detected using goat IgG anti-rat IgG (H&L-chain) polyclonal antibody directly conjugated to Alexa Fluor® 647 (AF647) commercially available from a competitor. Compared to the isotype control and secondary-only control- a CD169-positive population is apparent.

## Specification

<b>Product Description</b>	Rat recombinant monoclonal antibody raised against mouse Siglec1.
<b>Antibody Species</b>	Rat
<b>Immunogen</b>	Original antibody is raised against thioglycollate-elicited murine peritoneal macrophages (TPM) that had been cultured in mouse serum to induce sheep erythrocyte receptor (SER).
<b>Reactivity</b>	Mouse
<b>Form</b>	Liquid
<b>Isotype</b>	IgG2a kappa
<b>Recommend Usage</b>	Flow Cytometry Immunohistochemistry Western Blot The optimal working dilution should be determined by the end user.

**Storage Buffer**

In PBS with 0.02% Proclin 300

**Storage Instruction**

Store at 4°C for up to 3 months. For longer storage, aliquot and store at -20°C.  
Aliquot to avoid repeated freezing and thawing.

## Applications

- Western Blot
- Immunohistochemistry
- Flow Cytometry

Flow cytometric analysis of murine macrophages with Siglec1 recombinant monoclonal antibody, clone 3D6.112 (Cat # RAB03171).

Murine bone marrow-derived macrophages (BMDMs) were stained with RAB03171 (as well as isotype control) and bound antibody detected using goat IgG anti-rat IgG (H&L-chain) polyclonal antibody directly conjugated to Alexa Fluor® 647 (AF647) commercially available from a competitor. Compared to the isotype control and secondary-only control- a CD169-positive population is apparent.

## Gene Info — Siglec1

**Entrez GeneID**[20612](#)**Gene Name**

Siglec1

**Gene Alias**

CD169, Siglec-1, Sn

**Gene Description**

sialic acid binding Ig-like lectin 1, sialoadhesin

**Gene Ontology**[Hyperlink](#)**Gene Summary**

O

**Other Designations**

OTTMUSP00000016700|sialoadhesin