

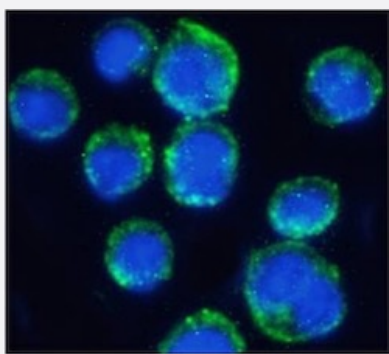
RecomAb™

ITGAX recombinant monoclonal antibody, clone N418

Catalog # RAB03159 Size 200 ug

Applications

Immunofluorescence



Immunofluorescent staining of U937 cells with ITGAX recombinant monoclonal antibody, clone N418 (Cat # RAB03159).

Immunofluorescence analysis of paraformaldehyde fixed U937 cells on Shi-fix™ coverslips- permeabilized with 0.15% Triton and stained with the chimeric r version of RAB03155 at 10 ug/ml for 1h followed by Alexa Fluor® 488 secondary antibody (1 ug/ml)- showing membrane staining. The nuclear stain is DAPI (blue). Panels show from left-right- top-bottom RAB03159- DAPI- merged channels and an isotype control. The isotype control was stained with an anti-Fluorescein antibody (0) followed by Alexa Fluor® 488 secondary antibody.

Specification

Product Description	Rabbit recombinant monoclonal antibody raised against human ITGAX.
Antibody Species	Rabbit
Immunogen	Original antibody is raised against hamster spleen cells that had been primed to mouse spleen dendritic cells.
Reactivity	Human, Mouse
Form	Liquid
Isotype	IgG
Recommend Usage	ELISA Immunofluorescence The optimal working dilution should be determined by the end user.

Storage Buffer

In PBS with 0.02% Proclin 300

Storage Instruction

Store at 4°C for up to 3 months. For longer storage, aliquot and store at -20°C.
Aliquot to avoid repeated freezing and thawing.

Applications

- Immunofluorescence

Immunofluorescent staining of U937 cells with ITGAX recombinant monoclonal antibody, clone N418 (Cat # RAB03159). Immunofluorescence analysis of paraformaldehyde fixed U937 cells on Shi-fix™ coverslips- permeabilized with 0.15% Triton and stained with the chimeric r version of RAB03155 at 10 ug/ml for 1h followed by Alexa Fluor® 488 secondary antibody (1 ug/ml)- showing membrane staining. The nuclear stain is DAPI (blue). Panels show from left-right- top-bottom RAB03159- DAPI- merged channels and an isotype control. The isotype control was stained with an anti-Fluorescein antibody (0) followed by Alexa Fluor® 488 secondary antibody.

- Enzyme-linked Immunoabsorbent Assay

Gene Info — ITGAX

Entrez GeneID[3687](#)**Gene Name**

ITGAX

Gene Alias

CD11C, SLEB6

Gene Description

integrin, alpha X (complement component 3 receptor 4 subunit)

Omim ID[151510](#)**Gene Ontology**[Hyperlink](#)**Gene Summary**

This gene encodes the integrin alpha X chain protein. Integrins are heterodimeric integral membrane proteins composed of an alpha chain and a beta chain. This protein combines with the beta 2 chain (ITGB2) to form a leukocyte-specific integrin referred to as inactivated-C3b (iC3b) receptor 4 (CR4). The alpha X beta 2 complex seems to overlap the properties of the alpha M beta 2 integrin in the adherence of neutrophils and monocytes to stimulated endothelium cells, and in the phagocytosis of complement coated particles. [provided by RefSeq]

Other Designations

OTTHUMP00000163299|integrin alpha X|integrin, alpha X (antigen CD11C (p150), alpha polypeptide)|leu M5, alpha subunit|leukocyte surface antigen p150,95, alpha subunit|myeloid membrane antigen, alpha subunit|p150 95 integrin alpha chain

Pathway

- [Regulation of actin cytoskeleton](#)

Disease

- [Genetic Predisposition to Disease](#)
- [Helicobacter Infections](#)
- [Lupus Erythematosus](#)
- [Stomach Ulcer](#)