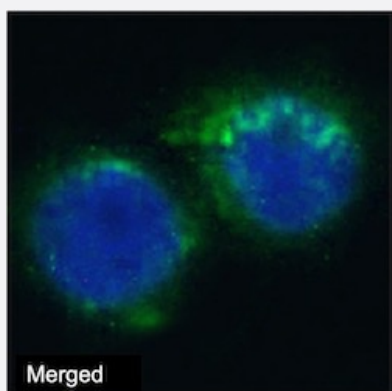


RecomAb™

ITGAL recombinant monoclonal antibody, clone MHM24

Catalog # RAB03155 Size 200 ug

Applications



Immunofluorescence

Immunofluorescent staining of Jurkat cells using ITGAL recombinant monoclonal antibody, clone MHM24 (Cat # RAB03155).

Immunofluorescence analysis of paraformaldehyde fixed Jurkat cells immobilized on Shi-fix™ cover-slips and stained with the chimeric r version of RAB03155 at 10 ug/ml followed by Alexa Fluor® 488 secondary antibody (2 ug/ml)- showing diffuse membrane staining. The nuclear stain is DAPI (blue). The isotype control was stained with anti-Fluorescein antibody (3.0) followed by Alexa Fluor® 488 secondary antibody.

Specification

Product Description	Rabbit recombinant monoclonal antibody raised against human ITGAL.
Antibody Species	Rabbit
Immunogen	Original antibody is raised against EBV-transformed human lymphoblastoid cells.
Reactivity	Human
Form	Liquid
Isotype	IgG
Recommend Usage	Flow Cytometry Inhibition Assay Immunofluorescence The optimal working dilution should be determined by the end user.
Storage Buffer	In PBS with 0.02% Proclin 300

Storage Instruction

Store at 4°C for up to 3 months. For longer storage, aliquot and store at -20°C.
Aliquot to avoid repeated freezing and thawing.

Applications

- Immunofluorescence

Immunofluorescent staining of Jurkat cells using ITGAL recombinant monoclonal antibody, clone MHM24 (Cat # RAB03155). Immunofluorescence analysis of paraformaldehyde fixed Jurkat cells immobilized on Shi-fix™ cover-slips and stained with the chimeric r version of RAB03155 at 10 ug/ml followed by Alexa Fluor® 488 secondary antibody (2 ug/ml)- showing diffuse membrane staining. The nuclear stain is DAPI (blue). The isotype control was stained with anti-Fluorescein antibody (3.0) followed by Alexa Fluor® 488 secondary antibody.

- Inhibition Assay

- Flow Cytometry

Gene Info — ITGAL

Entrez GeneID	3683
Gene Name	ITGAL
Gene Alias	CD11A, LFA-1, LFA1A
Gene Description	integrin, alpha L (antigen CD11A (p180), lymphocyte function-associated antigen 1; alpha polypeptide)
Omim ID	153370
Gene Ontology	Hyperlink
Gene Summary	ITGAL encodes the integrin alpha L chain. Integrins are heterodimeric integral membrane proteins composed of an alpha chain and a beta chain. This L-domain containing alpha integrin combines with the beta 2 chain (ITGB2) to form the integrin lymphocyte function-associated antigen-1 (LFA-1), which is expressed on all leukocytes. LFA-1 plays a central role in leukocyte intercellular adhesion through interactions with its ligands, ICAMs 1-3 (intercellular adhesion molecules 1 through 3), and also functions in lymphocyte costimulatory signaling. Two transcript variants encoding different isoforms have been found for this gene. [provided by RefSeq]
Other Designations	LFA-1 alpha antigen CD11A (p180), lymphocyte function-associated antigen 1, alpha polypeptide integrin alpha L integrin gene promoter lymphocyte function-associated antigen 1

Pathway

- [Cell adhesion molecules \(CAMs\)](#)
- [Leukocyte transendothelial migration](#)
- [Natural killer cell mediated cytotoxicity](#)
- [Regulation of actin cytoskeleton](#)

Disease

- [Cardiovascular Diseases](#)
- [Diabetes Mellitus](#)
- [Edema](#)
- [Genetic Predisposition to Disease](#)
- [Helicobacter Infections](#)
- [Stomach Ulcer](#)