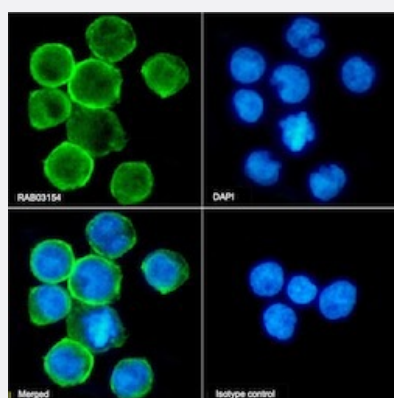


RecomAb™

ITGAL recombinant monoclonal antibody, clone MHM24

Catalog # RAB03154 Size 200 ug

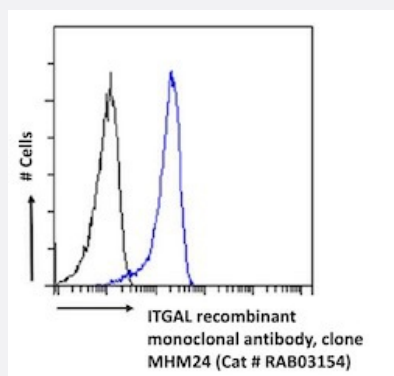
Applications



Immunofluorescence

Immunofluorescent staining of Jurkat cells using ITGAL recombinant monoclonal antibody, clone MHM24 (Cat # RAB03154).

Immunofluorescence analysis of paraformaldehyde fixed Jurkat cells stained with the chimeric mouse IgG version of RAB03154 at 10 ug/ml followed by Alexa Fluor® 488 secondary antibody (2 ug/ml)- showing membrane staining. The nuclear stain is DAPI (blue). Panels show from left-right- top-bottom RAB03154- DAPI- merged channels and an isotype control. The isotype control was stained with anti-unknown antibody (.1) followed by Alexa Fluor® 488 secondary antibody.



Flow Cytometry

Flow cytometric analysis of Jurkat cells with ITGAL recombinant monoclonal antibody, clone MHM24 (Cat # RAB03154).

Paraformaldehyde fixed Jurkat cells were stained with anti-unknown specificity antibody (.1; isotype control- black line) or the mouse IgG1 version of RAB03154 (blue line) at a dilution of 1:100 for 1h at RT. After washing- the bound antibody was detected using a goat anti-mouse IgG AlexaFluor® 488 antibody at a dilution of 1:1000 and cells analyzed using a FACSCanto flow-cytometer.

Specification

Product Description	Mouse recombinant monoclonal antibody raised against human ITGAL.
Antibody Species	Mouse
Immunogen	Original antibody is raised against EBV-transformed human lymphoblastoid cells.

Reactivity	Human
Form	Liquid
Isotype	IgG1 kappa
Recommend Usage	Flow Cytometry Inhibition Assay Immunofluorescence The optimal working dilution should be determined by the end user.
Storage Buffer	In PBS with 0.02% Proclin 300
Storage Instruction	Store at 4°C for up to 3 months. For longer storage, aliquot and store at -20°C. Aliquot to avoid repeated freezing and thawing.

Applications

- Immunofluorescence

Immunofluorescent staining of Jurkat cells using ITGAL recombinant monoclonal antibody, clone MHM24 (Cat # RAB03154). Immunofluorescence analysis of paraformaldehyde fixed Jurkat cells stained with the chimeric mouse IgG version of RAB03154 at 10 ug/ml followed by Alexa Fluor® 488 secondary antibody (2 ug/ml)- showing membrane staining. The nuclear stain is DAPI (blue). Panels show from left-right- top-bottom RAB03154- DAPI- merged channels and an isotype control. The isotype control was stained with anti-unknown antibody (.1) followed by Alexa Fluor® 488 secondary antibody.

- Inhibition Assay

- Flow Cytometry

Flow cytometric analysis of Jurkat cells with ITGAL recombinant monoclonal antibody, clone MHM24 (Cat # RAB03154). Paraformaldehyde fixed Jurkat cells were stained with anti-unknown specificity antibody (.1; isotype control- black line) or the mouse IgG1 version of RAB03154 (blue line) at a dilution of 1:100 for 1h at RT. After washing- the bound antibody was detected using a goat anti-mouse IgG AlexaFluor® 488 antibody at a dilution of 1:1000 and cells analyzed using a FACSCanto flow-cytometer.

Gene Info — ITGAL

Entrez GeneID	3683
Gene Name	ITGAL
Gene Alias	CD11A, LFA-1, LFA1A
Gene Description	integrin, alpha L (antigen CD11A (p180), lymphocyte function-associated antigen 1; alpha polypeptide)

Omim ID [153370](#)

Gene Ontology [Hyperlink](#)

Gene Summary ITGAL encodes the integrin alpha L chain. Integrins are heterodimeric integral membrane proteins composed of an alpha chain and a beta chain. This I-domain containing alpha integrin combines with the beta 2 chain (ITGB2) to form the integrin lymphocyte function-associated antigen-1 (LFA-1), which is expressed on all leukocytes. LFA-1 plays a central role in leukocyte intercellular adhesion through interactions with its ligands, ICAMs 1-3 (intercellular adhesion molecules 1 through 3), and also functions in lymphocyte costimulatory signaling. Two transcript variants encoding different isoforms have been found for this gene. [provided by RefSeq]

Other Designations LFA-1 alpha|antigen CD11A (p180), lymphocyte function-associated antigen 1, alpha polypeptide|integrin alpha L|integrin gene promoter|lymphocyte function-associated antigen 1

Pathway

- [Cell adhesion molecules \(CAMs\)](#)
- [Leukocyte transendothelial migration](#)
- [Natural killer cell mediated cytotoxicity](#)
- [Regulation of actin cytoskeleton](#)

Disease

- [Cardiovascular Diseases](#)
- [Diabetes Mellitus](#)
- [Edema](#)
- [Genetic Predisposition to Disease](#)
- [Helicobacter Infections](#)
- [Stomach Ulcer](#)