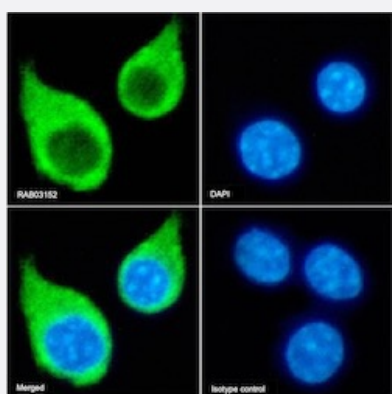


RecomAb™

Csf1r recombinant monoclonal antibody, clone AFS98

Catalog # RAB03152 Size 200 ug

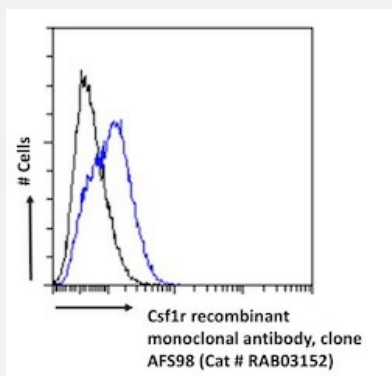
Applications



Immunofluorescence

Immunofluorescent staining of RAW264.7 cells with Csf1r recombinant monoclonal antibody, clone AFS98 (Cat # RAB03152).

Immunofluorescence analysis of paraformaldehyde fixed RAW264.7 cells on Shi-fix™ coverslips stained with the chimeric r version of RAB03152 at 10 ug/ml for 1h followed by Alexa Fluor® 488 secondary antibody (2 ug/ml)- showing membrane staining. The nuclear stain is DAPI (blue). Panels show from left-right- top-bottom RAB03152- DAPI- merged channels and an isotype control. The isotype control was an unknown specificity antibody (.1) followed by staining with Alexa Fluor® 488 secondary antibody.



Flow Cytometry

Flow cytometric analysis of mouse splenocytes with Csf1r recombinant monoclonal antibody, clone AFS98 (Cat # RAB03152).

Paraformaldehyde fixed mouse splenocytes were stained with anti-unknown specificity antibody (3.0; isotype control- black line) or the r version of RAB03152 (blue line) at a dilution of 1:100 for 1h at RT. After washing- the bound antibody was detected using a goat anti-r AlexaFluor® 488 antibody at a dilution of 1:1000 and cells analyzed using a FACSCanto flow-cytometer.

Specification

Product Description	Rabbit recombinant monoclonal antibody raised against mouse Csf1r.
Antibody Species	Rabbit
Immunogen	Original antibody is raised against CD115.
Reactivity	Mouse

Form	Liquid
Isotype	IgG
Recommend Usage	Blocking Flow Cytometry Immunofluorescence Immunohistochemistry Western Blot The optimal working dilution should be determined by the end user.
Storage Buffer	In PBS with 0.02% Proclin 300
Storage Instruction	Store at 4°C for up to 3 months. For longer storage, aliquot and store at -20°C. Aliquot to avoid repeated freezing and thawing.

Applications

- Western Blot
- Immunohistochemistry
- Immunofluorescence

Immunofluorescent staining of RAW264.7 cells with Csf1r recombinant monoclonal antibody, clone AFS98 (Cat # RAB03152). Immunofluorescence analysis of paraformaldehyde fixed RAW264.7 cells on Shi-fix™ coverslips stained with the chimeric r version of RAB03152 at 10 ug/ml for 1h followed by Alexa Fluor® 488 secondary antibody (2 ug/ml)- showing membrane staining. The nuclear stain is DAPI (blue). Panels show from left-right- top-bottom RAB03152- DAPI- merged channels and an isotype control. The isotype control was an unknown specificity antibody (.1) followed by staining with Alexa Fluor® 488 secondary antibody.

- Blocking
- Flow Cytometry

Flow cytometric analysis of mouse splenocytes with Csf1r recombinant monoclonal antibody, clone AFS98 (Cat # RAB03152). Paraformaldehyde fixed mouse splenocytes were stained with anti-unknown specificity antibody (3.0; isotype control- black line) or the r version of RAB03152 (blue line) at a dilution of 1:100 for 1h at RT. After washing- the bound antibody was detected using a goat anti-r AlexaFluor® 488 antibody at a dilution of 1:1000 and cells analyzed using a FACSCanto flow-cytometer.

Gene Info — Csf1r

Entrez GeneID	12978
Gene Name	Csf1r

Gene Alias	AI323359, CD115, CSF-1R, Csfmr, Fim-2, Fms, M-CSFR
Gene Description	colony stimulating factor 1 receptor
Gene Ontology	Hyperlink
Other Designations	OTTMUSP00000015851