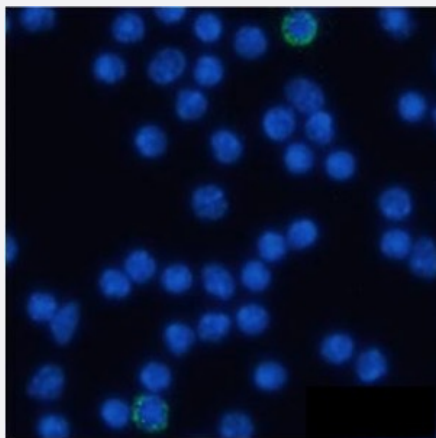


RecomAb™

Eng recombinant monoclonal antibody, clone MJ7/18

Catalog # RAB03144 Size 200 ug

Applications



Immunofluorescence

Immunofluorescent staining of mouse splenocytes with Eng recombinant monoclonal antibody, clone MJ7/18 (Cat # RAB03110).

Immunofluorescence analysis of paraformaldehyde fixed mouse splenocytes on Shi-fix™ coverslips- permeated with 0.15% Triton and stained with the chimeric r version of MJ7/18 (24-441) at 10 ug/ml for 1h followed by Alexa Fluor® 488 secondary antibody (1 ug/ml)- showing membrane staining in a small subset of cells. The nuclear stain is DAPI (blue). The isotype control was stained with an anti-Fluorescein antibody (0) followed by Alexa Fluor® 488 secondary antibody.

Specification

Product Description Rabbit recombinant monoclonal antibody raised against mouse Eng.

Antibody Species Rabbit

Immunogen Original antibody is raised against inflamed mouse skin tissue.

Reactivity Mouse

Form Liquid

Isotype IgG

Recommend Usage

- Flow Cytometry
- Immunofluorescence
- Immunohistochemistry
- Immunoprecipitation
- Western Blot

The optimal working dilution should be determined by the end user.

Storage Buffer

In PBS with 0.02% Proclin 300

Storage Instruction

Store at 4°C for up to 3 months. For longer storage, aliquot and store at -20°C.
Aliquot to avoid repeated freezing and thawing.

Applications

- Western Blot
- Immunohistochemistry
- Immunofluorescence

Immunofluorescent staining of mouse splenocytes with Eng recombinant monoclonal antibody, clone MJ7/18 (Cat # RAB03110). Immunofluorescence analysis of paraformaldehyde fixed mouse splenocytes on Shi-fix™ coverslips- permewith 0.15% Triton and stained with the chimeric r version of MJ7/18 (24-441) at 10 ug/ml for 1h followed by Alexa Fluor® 488 secondary antibody (1 ug/ml)- showing membrane staining in a small subset of cells. The nuclear stain is DAPI (blue). The isotype control was stained with an anti-Fluorescein antibody (0) followed by Alexa Fluor® 488 secondary antibody.

- Immunoprecipitation
- Flow Cytometry

Gene Info — Eng

Entrez GeneID [13805](#)**Gene Name** Eng**Gene Alias** AI528660, AI662476, CD105, S-endoglin**Gene Description** endoglin**Gene Ontology** [Hyperlink](#)**Other Designations** OTTMUSP00000012838|transmembrane glycoprotein