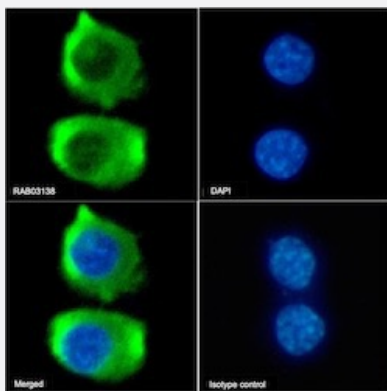


RecomAb™

Ccr9 recombinant monoclonal antibody, clone 9B1

Catalog # RAB03138 Size 200 ug

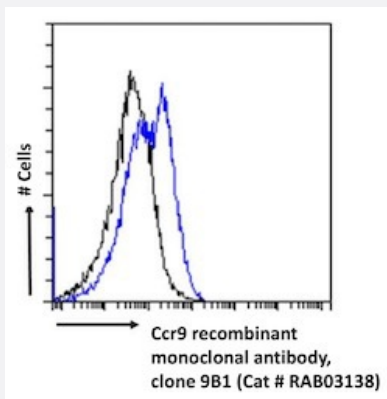
Applications



Immunofluorescence

Immunofluorescent staining of RAW264.7 cells with Ccr9 recombinant monoclonal antibody, clone 9B1 (Cat # RAB03138).

Immunofluorescence analysis of paraformaldehyde fixed RAW264.7 cells on Shi-fix™ coverslips stained with the chimeric r version of RAB03138 at 10 ug/ml for 1h followed by Alexa Fluor® 488 secondary antibody (2 ug/ml)- showing membrane staining. The nuclear stain is DAPI (blue). Panels show from left-right- top-bottom RAB03138- DAPI- merged channels and an isotype control. The isotype control was an unknown specificity antibody (.1) followed by staining with Alexa Fluor® 488 secondary antibody.



Flow Cytometry

Flow cytometric analysis of mouse splenocytes with Ccr9 recombinant monoclonal antibody, clone 9B1 (Cat # RAB03138).

Paraformaldehyde fixed mouse splenocytes were stained with anti-unknown specificity antibody (3.0; isotype control- black line) or the r version of RAB03138 (blue line) at a dilution of 1:100 for 1h at RT. After washing- the bound antibody was detected using a goat anti-r AlexaFluor® 488 antibody at a dilution of 1:1000 and cells analyzed using a FACSCanto flow-cytometer.

Specification

Product Description	Rabbit recombinant monoclonal antibody raised against mouse Ccr9.
Antibody Species	Rabbit
Immunogen	Original antibody is raised against KLH-conjugated linear peptide corresponding to the N-terminus of mouse Ccr9.

Reactivity	Mouse
Form	Liquid
Isotype	IgG
Recommend Usage	Flow Cytometry Immunofluorescence Neutralization The optimal working dilution should be determined by the end user.
Storage Buffer	In PBS with 0.02% Proclin 300
Storage Instruction	Store at 4°C for up to 3 months. For longer storage, aliquot and store at -20°C. Aliquot to avoid repeated freezing and thawing.

Applications

Immunofluorescence

Immunofluorescent staining of RAW264.7 cells with Ccr9 recombinant monoclonal antibody, clone 9B1 (Cat # RAB03138). Immunofluorescence analysis of paraformaldehyde fixed RAW264.7 cells on Shi-fix™ coverslips stained with the chimeric r version of RAB03138 at 10 ug/ml for 1h followed by Alexa Fluor® 488 secondary antibody (2 ug/ml)- showing membrane staining. The nuclear stain is DAPI (blue). Panels show from left-right- top-bottom RAB03138- DAPI- merged channels and an isotype control. The isotype control was an unknown specificity antibody (.1) followed by staining with Alexa Fluor® 488 secondary antibody.

Flow Cytometry

Flow cytometric analysis of mouse splenocytes with Ccr9 recombinant monoclonal antibody, clone 9B1 (Cat # RAB03138). Paraformaldehyde fixed mouse splenocytes were stained with anti-unknown specificity antibody (3.0; isotype control- black line) or the r version of RAB03138 (blue line) at a dilution of 1:100 for 1h at RT. After washing- the bound antibody was detected using a goat anti-r AlexaFluor® 488 antibody at a dilution of 1:1000 and cells analyzed using a FACSCanto flow-cytometer.

Neutralization

Gene Info — Ccr9

Entrez GeneID	12769
Gene Name	Ccr9
Gene Alias	Cmkbr10, GPR-9-6
Gene Description	chemokine (C-C motif) receptor 9
Gene Ontology	Hyperlink

Other Designations

-