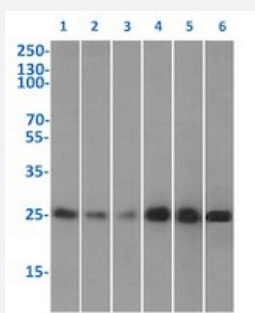


RecomAb™

CBX5 recombinant monoclonal antibody, clone RAB-C133

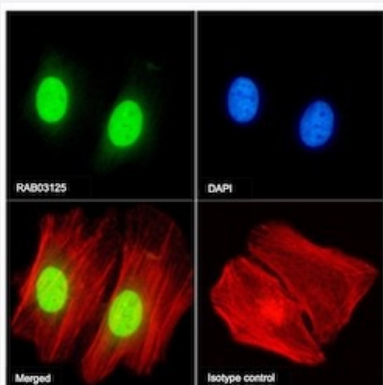
Catalog # RAB03125 Size 200 ug

Applications



Western Blot

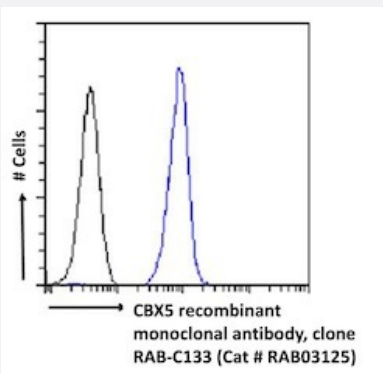
Western blot analysis of Lane 1: HeLa, Lane 2: HEK293, Lane 3: A431, Lane 4: MCF7, Lane 5: Jurkat and Lane 6: K562 cell lysates with CBX5 recombinant monoclonal antibody, clone RAB-C133 (Cat # RAB03125).



Immunofluorescence

Immunofluorescent staining of HeLa cells with CBX5 recombinant monoclonal antibody, clone RAB-C133 (Cat # RAB03125).

Immunofluorescence analysis of paraformaldehyde fixed HeLa cells permeabilized with 0.15% Triton stained with the chimeric r version of RAB03125 (1:100 dilution) for 1h followed by Alexa Fluor® 488 secondary antibody (1:1000 dilution)- showing nuclear staining. The nuclear stain is DAPI (blue). Panels show from left-right- top-bottom RAB03125- DAPI- merged channels and an isotype control. The isotype control was an unknown specificity antibody (3.0) followed by staining with Alexa Fluor® 488 secondary antibody.



Flow Cytometry

Flow cytometric analysis of HeLa cells with CBX5 recombinant monoclonal antibody, clone RAB-C133 (Cat # RAB03125).

Paraformaldehyde fixed HeLa cells permeabilized with 0.5% Triton were stained with anti-unknown specificity antibody (3.0; isotype control- black line) or the r version of RAB03125 (blue line) at a dilution of 1:100 for 1h at RT. After washing- the bound antibody was detected using a goat anti-r AlexaFluor® 488 antibody at a dilution of 1:1000 and cells analyzed using a FACSCanto flow-cytometer.

Specification

Product Description	Rabbit recombinant monoclonal antibody raised against human CBX5.
Antibody Species	Rabbit
Immunogen	Original antibody is raised against CBX5 protein under non-denaturing conditions.
Reactivity	Human
Form	Liquid
Isotype	IgG
Recommend Usage	ChIP ELISA Flow Cytometry Immunofluorescence IP-MS Western Blot The optimal working dilution should be determined by the end user.
Storage Buffer	In PBS with 0.02% Proclin 300
Storage Instruction	Store at 4°C for up to 3 months. For longer storage, aliquot and store at -20°C. Aliquot to avoid repeated freezing and thawing.

Applications

- ChIP

- Western Blot

Western blot analysis of Lane 1: HeLa, Lane 2: HEK293, Lane 3: A431, Lane 4: MCF7, Lane 5: Jurkat and Lane 6: K562 cell lysates with CBX5 recombinant monoclonal antibody, clone RAB-C133 (Cat # RAB03125).

- Immunofluorescence

Immunofluorescent staining of HeLa cells with CBX5 recombinant monoclonal antibody, clone RAB-C133 (Cat # RAB03125). Immunofluorescence analysis of paraformaldehyde fixed HeLa cells permeabilized with 0.15% Triton stained with the chimeric r version of RAB03125 (1:100 dilution) for 1h followed by Alexa Fluor® 488 secondary antibody (1:1000 dilution)- showing nuclear staining. The nuclear stain is DAPI (blue). Panels show from left-right- top-bottom RAB03125- DAPI- merged channels and an isotype control. The isotype control was an unknown specificity antibody (3.0) followed by staining with Alexa Fluor® 488 secondary antibody.

- Enzyme-linked Immunoabsorbent Assay

- Flow Cytometry

Flow cytometric analysis of HeLa cells with CBX5 recombinant monoclonal antibody, clone RAB-C133 (Cat # RAB03125). Paraformaldehyde fixed HeLa cells permeabilized with 0.5% Triton were stained with anti-unknown specificity antibody (3.0; isotype control- black line) or the r version of RAB03125 (blue line) at a dilution of 1:100 for 1h at RT. After washing- the bound antibody was detected using a goat anti-r AlexaFluor® 488 antibody at a dilution of 1:1000 and cells analyzed using a FACSCanto flow-cytometer.

Gene Info — CBX5

Entrez GeneID [23468](#)

Gene Name CBX5

Gene Alias HP1, HP1A

Gene Description chromobox homolog 5 (HP1 alpha homolog, Drosophila)

Omim ID [604478](#)

Gene Ontology [Hyperlink](#)

Gene Summary This gene encodes a highly conserved nonhistone protein, which is a member of the heterochromatin protein family. The protein is enriched in the heterochromatin and associated with centromeres. The protein has a single N-terminal chromodomain which can bind to histone proteins via methylated lysine residues, and a C-terminal chromo shadow-domain (CSD) which is responsible for the homodimerization and interaction with a number of chromatin-associated nonhistone proteins. The encoded product is involved in the formation of functional kinetochore through interaction with essential kinetochore proteins. The gene has a pseudogene located on chromosome 3. Multiple alternatively spliced variants, encoding the same protein, have been identified. [provided by RefSeq]

Other Designations HP1-ALPHA|HP1Hs alpha|antigen p25|heterochromatin protein 1 homolog alpha|heterochromatin protein 1-alpha