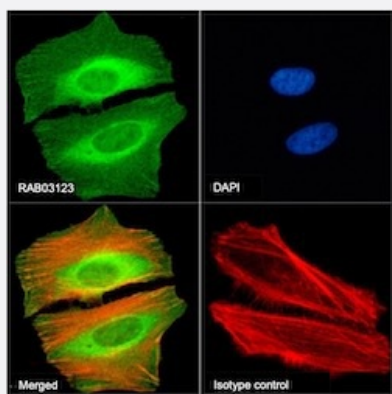


RecomAb™

## CBX2 recombinant monoclonal antibody, clone RAB-C238

Catalog # RAB03123      Size 200 ug

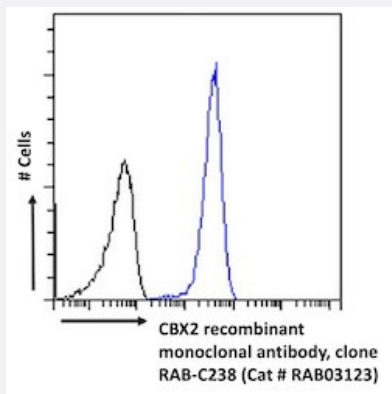
### Applications



#### Immunofluorescence

Immunofluorescent staining of HeLa cells with CBX2 recombinant monoclonal antibody, clone RAB-C238 (Cat # RAB03123).

Immunofluorescence analysis of paraformaldehyde fixed HeLa cells on Shi-fix™ coverslips stained with the chimeric r version of RAB03123 at 10 ug/ml for 1h followed by Alexa Fluor® 488 secondary antibody (2 ug/ml)- showing membrane staining. The nuclear stain is DAPI (blue) and the actin stain is phalloidin (red). Panels show from left-right- top-bottom RAB03123- DAPI- merged channels and an isotype control. The isotype control was an unknown specificity antibody (3.0) followed by staining with Alexa Fluor® 488 secondary antibody.



#### Flow Cytometry

Flow cytometric analysis of HeLa cells with CBX2 recombinant monoclonal antibody, clone RAB-C238 (Cat # RAB03123).

HeLa cells were fixed using 2% PFA and stained with anti-unknown specificity antibody (3.0; isotype control- black line) or the r1 version of RAB03123 (blue line) at a dilution of 1:100 for 1h at RT. After washing- the bound antibody was detected using a goat anti-r AlexaFluor® 488 antibody at a dilution of 1:1000 and cells analyzed using a FACSCanto flow-cytometer.

### Specification

Product Description	Rabbit recombinant monoclonal antibody raised against human CBX2.
Antibody Species	Rabbit
Immunogen	Original antibody is raised against CBX2 protein under non-denaturing conditions.

Reactivity	Human
Form	Liquid
Isotype	IgG
Recommend Usage	ChIP ELISA Flow Cytometry Immunofluorescence IP-MS The optimal working dilution should be determined by the end user.
Storage Buffer	In PBS with 0.02% Proclin 300
Storage Instruction	Store at 4°C for up to 3 months. For longer storage, aliquot and store at -20°C. Aliquot to avoid repeated freezing and thawing.

## Applications

- ChIP

- Immunofluorescence

Immunofluorescent staining of HeLa cells with CBX2 recombinant monoclonal antibody, clone RAB-C238 (Cat # RAB03123). Immunofluorescence analysis of paraformaldehyde fixed HeLa cells on Shi-fix™ coverslips stained with the chimeric r version of RAB03123 at 10 ug/ml for 1h followed by Alexa Fluor® 488 secondary antibody (2 ug/ml)- showing membrane staining. The nuclear stain is DAPI (blue) and the actin stain is phalloidin (red). Panels show from left-right- top-bottom RAB03123- DAPI- merged channels and an isotype control. The isotype control was an unknown specificity antibody (3.0) followed by staining with Alexa Fluor® 488 secondary antibody.

- Enzyme-linked Immunoabsorbent Assay

- Flow Cytometry

Flow cytometric analysis of HeLa cells with CBX2 recombinant monoclonal antibody, clone RAB-C238 (Cat # RAB03123). HeLa cells were fixed using 2% PFA and stained with anti-unknown specificity antibody (3.0; isotype control- black line) or the r1 version of RAB03123 (blue line) at a dilution of 1:100 for 1h at RT. After washing- the bound antibody was detected using a goat anti-r AlexaFluor® 488 antibody at a dilution of 1:1000 and cells analyzed using a FACSCanto flow-cytometer.

## Gene Info — CBX2

Entrez GeneID	<a href="#">84733</a>
Gene Name	CBX2
Gene Alias	CDCA6, M33, MGC10561

Gene Description	chromobox homolog 2 (Pc class homolog, Drosophila)
Omim ID	<a href="#">602770</a>
Gene Ontology	<a href="#">Hyperlink</a>
Gene Summary	O
Other Designations	M33 polycomb-like cell division cycle associated 6 chromobox homolog 2 modifier 3