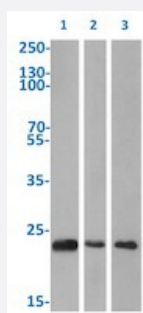


RecomAb™

# CBX1 recombinant monoclonal antibody, clone RAB-C145

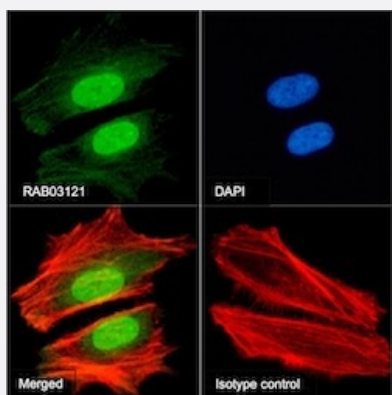
Catalog # RAB03121      Size 200 ug

## Applications



### Western Blot

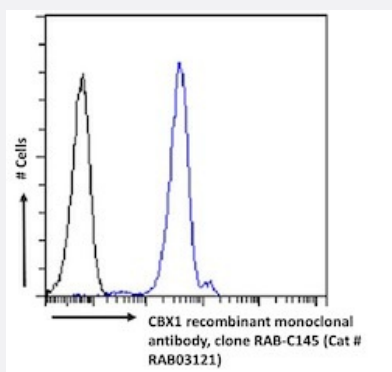
Western blot analysis of Lane 1: HeLa, Lane 2: HEK293 and Lane 3: MCF7 cell lysates with CBX1 recombinant monoclonal antibody, clone RAB-C145 (Cat # RAB03121).



### Immunofluorescence

Immunofluorescent staining of HeLa cells with CBX1 recombinant monoclonal antibody, clone RAB-C145 (Cat # RAB03121).

Immunofluorescence analysis of paraformaldehyde fixed HeLa cells on Shi-fix™ coverslips stained with the chimeric r version of RAB03121 at 10 ug/ml for 1h followed by Alexa Fluor® 488 secondary antibody (2 ug/ml)- showing membrane staining. The nuclear stain is DAPI (blue) and the actin stain is phalloidin (red). Panels show from left-right- top-bottom RAB03121- DAPI- merged channels and an isotype control. The isotype control was an unknown specificity antibody (3.0) followed by staining with Alexa Fluor® 488 secondary antibody.



### Flow Cytometry

Flow cytometric analysis of HeLa cells with CBX1 recombinant monoclonal antibody, clone RAB-C145 (Cat # RAB03121).

HeLa cells were fixed using 2% PFA and stained with anti-unknown specificity antibody (3.0; isotype control- black line) or the r1 version of RAB03121 (blue line) at a dilution of 1:100 for 1h at RT. After washing- the bound antibody was detected using a goat anti-r AlexaFluor® 488 antibody at a dilution of 1:1000 and cells analyzed using a FACSCanto flow-cytometer.

## Specification

<b>Product Description</b>	Rabbit recombinant monoclonal antibody raised against human CBX1.
<b>Antibody Species</b>	Rabbit
<b>Immunogen</b>	Original antibody is raised against CBX1 protein under non-denaturing conditions.
<b>Reactivity</b>	Human
<b>Form</b>	Liquid
<b>Isotype</b>	IgG
<b>Recommend Usage</b>	ChIP ELISA Flow Cytometry Immunofluorescence IP-MS Western Blot The optimal working dilution should be determined by the end user.
<b>Storage Buffer</b>	In PBS with 0.02% Proclin 300
<b>Storage Instruction</b>	Store at 4°C for up to 3 months. For longer storage, aliquot and store at -20°C. Aliquot to avoid repeated freezing and thawing.

## Applications

- ChIP

- Western Blot

Western blot analysis of Lane 1: HeLa, Lane 2: HEK293 and Lane 3: MCF7 cell lysates with CBX1 recombinant monoclonal antibody, clone RAB-C145 (Cat # RAB03121).

- Immunofluorescence

Immunofluorescent staining of HeLa cells with CBX1 recombinant monoclonal antibody, clone RAB-C145 (Cat # RAB03121). Immunofluorescence analysis of paraformaldehyde fixed HeLa cells on Shi-fix™ coverslips stained with the chimeric r version of RAB03121 at 10 ug/ml for 1h followed by Alexa Fluor® 488 secondary antibody (2 ug/ml)- showing membrane staining. The nuclear stain is DAPI (blue) and the actin stain is phalloidin (red). Panels show from left-right- top-bottom RAB03121- DAPI- merged channels and an isotype control. The isotype control was an unknown specificity antibody (3.0) followed by staining with Alexa Fluor® 488 secondary antibody.

- Enzyme-linked Immunoabsorbent Assay

- Flow Cytometry

Flow cytometric analysis of HeLa cells with CBX1 recombinant monoclonal antibody, clone RAB-C145 (Cat # RAB03121). HeLa cells were fixed using 2% PFA and stained with anti-unknown specificity antibody (3.0; isotype control- black line) or the r1 version of RAB03121 (blue line) at a dilution of 1:100 for 1h at RT. After washing- the bound antibody was detected using a goat anti-r AlexaFluor® 488 antibody at a dilution of 1:1000 and cells analyzed using a FACSCanto flow-cytometer.

## Gene Info — CBX1

Entrez GeneID	<a href="#">10951</a>
---------------	-----------------------

Gene Name	CBX1
-----------	------

Gene Alias	CBX, HP1-BETA, HP1Hs-beta, HP1Hsbeta, M31, MOD1, p25beta
------------	--

Gene Description	chromobox homolog 1 (HP1 beta homolog Drosophila )
------------------	--

Omim ID	<a href="#">604511</a>
---------	------------------------

Gene Ontology	<a href="#">Hyperlink</a>
---------------	---------------------------

Gene Summary	<p>This gene encodes a highly conserved nonhistone protein, which is a member of the heterochromatin protein family . The protein is enriched in the heterochromatin and associated with centromeres. The protein has a single N-terminal chromodomain which can bind to histone proteins via methylated lysine residues, and a C-terminal chromo shadow-domain (CSD) which is responsible for the homodimerization and interaction with a number of chromatin-associated nonhistone proteins. The protein may play an important role in the epigenetic control of chromatin structure and gene expression. Several related pseudogenes are located on chromosomes 1, 3, and X. Multiple alternatively spliced variants, encoding the same protein, have been identified. [provided by RefSeq</p>
--------------	---

Other Designations	heterochromatin protein 1-beta heterochromatin protein p25 beta modifier 1 protein
--------------------	--