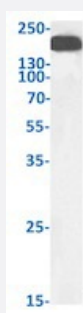


RecomAb™

CEA recombinant monoclonal antibody, clone A5B7

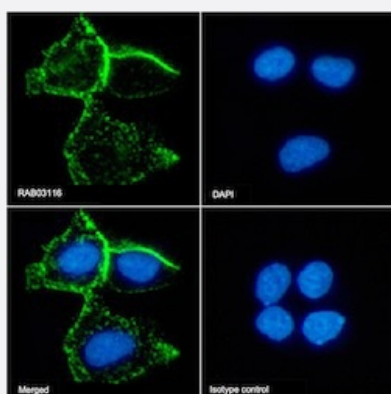
Catalog # RAB03116 Size 200 ug

Applications



Western Blot

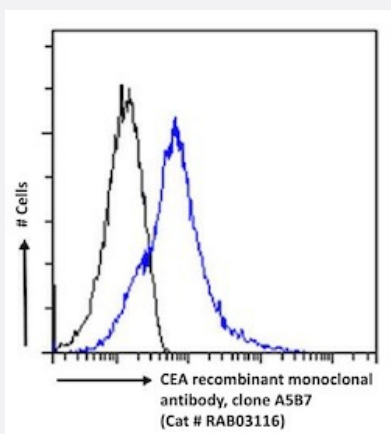
Western blot analysis of human colorectal carcinoma tissue lysate with CEA recombinant monoclonal antibody, clone A5B7 (Cat # RAB03116).



Immunofluorescence

Immunofluorescent staining of MCF7 cells with CEA recombinant monoclonal antibody, clone A5B7 (Cat # RAB03116).

Immunofluorescence analysis of paraformaldehyde fixed MCF7 cells stained with the chimeric mouse IgG version of RAB03116 at 10 ug/ml followed by Alexa Fluor® 488 secondary antibody (2 ug/ml)- showing membrane staining. The nuclear stain is DAPI (blue). Panels show from left-right- top-bottom RAB03116- DAPI- merged channels and an isotype control. The isotype control was stained with anti-unknown antibody (.1) followed by Alexa Fluor® 488 secondary antibody.



Flow Cytometry

Flow cytometric analysis of MCF7 cells with CEA recombinant monoclonal antibody, clone A5B7 (Cat # RAB03116).

Paraformaldehyde fixed MCF7 cells were stained with anti-unknown specificity antibody (.1; isotype control- black line) or the mouse IgG1 version of RAB03116 (blue line) at a dilution of 1:100 for 1h at RT. After washing- the bound antibody was detected using a goat anti-mouse IgG AlexaFluor® 488 antibody at a dilution of 1:1000 and cells analyzed using a FACSCanto flow-cytometer.

Specification

Product Description	Mouse recombinant monoclonal antibody raised against human CEA.
Antibody Species	Mouse
Immunogen	Original antibody is raised against both CEA protein purified from the metastases of colonic tumours and heat-treated CEA.
Reactivity	Human
Form	Liquid
Isotype	IgG1 kappa
Recommend Usage	Flow Cytometry Immunofluorescence Immunohistochemistry Western Blot The optimal working dilution should be determined by the end user.
Storage Buffer	In PBS with 0.02% Proclin 300
Storage Instruction	Store at 4°C for up to 3 months. For longer storage, aliquot and store at -20°C. Aliquot to avoid repeated freezing and thawing.

Applications

- Western Blot

Western blot analysis of human colorectal carcinoma tissue lysate with CEA recombinant monoclonal antibody, clone A5B7 (Cat # RAB03116).

- Immunohistochemistry (Formalin/PFA-fixed paraffin-embedded sections)

- Immunofluorescence

Immunofluorescent staining of MCF7 cells with CEA recombinant monoclonal antibody, clone A5B7 (Cat # RAB03116). Immunofluorescence analysis of paraformaldehyde fixed MCF7 cells stained with the chimeric mouse IgG version of RAB03116 at 10 ug/ml followed by Alexa Fluor® 488 secondary antibody (2 ug/ml)- showing membrane staining. The nuclear stain is DAPI (blue). Panels show from left-right- top-bottom RAB03116- DAPI- merged channels and an isotype control. The isotype control was stained with anti-unknown antibody (.1) followed by Alexa Fluor® 488 secondary antibody.

- Flow Cytometry

Flow cytometric analysis of MCF7 cells with CEA recombinant monoclonal antibody, clone A5B7 (Cat # RAB03116). Paraformaldehyde fixed MCF7 cells were stained with anti-unknown specificity antibody (.1; isotype control- black line) or the mouse IgG1 version of RAB03116 (blue line) at a dilution of 1:100 for 1h at RT. After washing- the bound antibody was detected using a goat anti-mouse IgG AlexaFluor® 488 antibody at a dilution of 1:1000 and cells analyzed using a FACSCanto flow-cytometer.

Gene Info — PSG2

Entrez GeneID	5670
Gene Name	PSG2
Gene Alias	CEA, PSBG2, PSG1, PSGGB
Gene Description	pregnancy specific beta-1-glycoprotein 2
Omim ID	176391
Gene Ontology	Hyperlink
Other Designations	Pregnancy-specific beta-1-glycoprotein-2 carcinoembryonic antigen SG8 pregnancy-specific beta-1 glycoprotein pregnancy-specific beta-1-glycoprotein 7