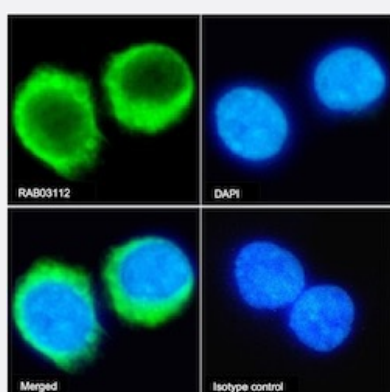


RecomAb™

## C5AR1 recombinant monoclonal antibody, clone 32-G1

Catalog # RAB03112      Size 200 ug

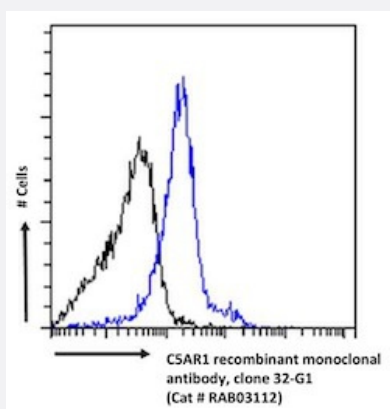
### Applications



#### Immunofluorescence

Immunofluorescent staining of U937 cells with C5AR1 recombinant monoclonal antibody, clone 32-G1 (Cat # RAB03112).

Immunofluorescence analysis of paraformaldehyde fixed U937 cells on Shi-fix™ coverslips stained with the chimeric r version RAB03112 at 10 ug/ml for 1h followed by Alexa Fluor® 488 secondary antibody (2 ug/ml)- showing membrane staining. The nuclear stain is DAPI (blue). Panels show from left-right- top-bottom RAB03112- DAPI- merged channels and an isotype control. The isotype control was an unknown specificity antibody (.1) followed by staining with Alexa Fluor® 488 secondary antibody.



#### Flow Cytometry

Flow cytometric analysis of U937 cells with C5AR1 recombinant monoclonal antibody, clone 32-G1 (Cat#RAB03112).

U937 cells were stained with anti-unknown specificity antibody (3.0; isotype control- black line) or the r version of RAB03112 (blue line) at a dilution of 1:100 for 1h at RT. After washing- the bound antibody was detected using a goat anti-r AlexaFluor® 488 antibody at a dilution of 1:1000 and cells analyzed using a FACSCanto flow-cytometer.

### Specification

**Product Description** Rabbit recombinant monoclonal antibody raised against human C5AR1.

**Antibody Species** Rabbit

<b>Immunogen</b>	Original antibody is raised against a synthetic C5AR1 C-terminal phosphopeptide that contained phosphoserine instead of serine at position 334 and also at the neighboring phosphorylation sites Ser-332 and Ser-338.
<b>Reactivity</b>	Human
<b>Form</b>	Liquid
<b>Isotype</b>	IgG kappa
<b>Recommend Usage</b>	Flow Cytometry Immunofluorescence Western Blot The optimal working dilution should be determined by the end user.
<b>Storage Buffer</b>	In PBS with 0.02% Proclin 300
<b>Storage Instruction</b>	Store at 4°C for up to 3 months. For longer storage, aliquot and store at -20°C. Aliquot to avoid repeated freezing and thawing.

## Applications

- Western Blot

- Immunofluorescence

Immunofluorescent staining of U937 cells with C5AR1 recombinant monoclonal antibody, clone 32-G1 (Cat # RAB03112). Immunofluorescence analysis of paraformaldehyde fixed U937 cells on Shi-fix™ coverslips stained with the chimeric r version RAB03112 at 10 ug/ml for 1h followed by Alexa Fluor® 488 secondary antibody (2 ug/ml)- showing membrane staining. The nuclear stain is DAPI (blue). Panels show from left-right- top-bottom RAB03112- DAPI- merged channels and an isotype control. The isotype control was an unknown specificity antibody (.1) followed by staining with Alexa Fluor® 488 secondary antibody.

- Flow Cytometry

Flow cytometric analysis of U937 cells with C5AR1 recombinant monoclonal antibody, clone 32-G1 (Cat#RAB03112). U937 cells were stained with anti-unknown specificity antibody (3.0; isotype control- black line) or the r version of RAB03112 (blue line) at a dilution of 1:100 for 1h at RT. After washing- the bound antibody was detected using a goat anti-r AlexaFluor® 488 antibody at a dilution of 1:1000 and cells analyzed using a FACSCanto flow-cytometer.

## Gene Info — C5AR1

<b>Entrez GeneID</b>	<a href="#">728</a>
<b>Gene Name</b>	C5AR1
<b>Gene Alias</b>	C5A, C5AR, C5R1, CD88

Gene Description	complement component 5a receptor 1
Omim ID	<a href="#">113995</a>
Gene Ontology	<a href="#">Hyperlink</a>
Other Designations	C5a anaphylatoxin receptor C5a ligand complement component 5 receptor 1

## Pathway

- [Complement and coagulation cascades](#)
- [Neuroactive ligand-receptor interaction](#)

## Disease

- [Asthma](#)
- [Birth Weight](#)
- [Familial Mediterranean fever](#)
- [Genetic Predisposition to Disease](#)
- [Glioblastoma](#)
- [Glioma](#)
- [Hypersensitivity](#)
- [Leukemia](#)
- [Lung Neoplasms](#)
- [Lymphoma](#)
- [Macular Degeneration](#)
- [Meningeal Neoplasms](#)
- [Meningioma](#)
- [Pulmonary Disease](#)