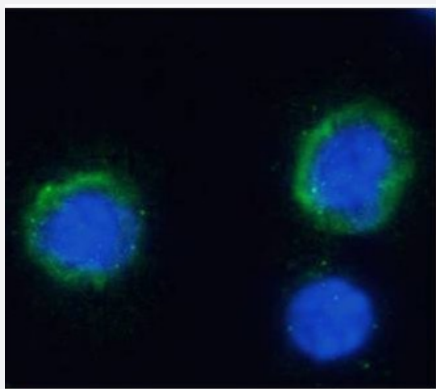


RecomAb™

# C3AR1 recombinant monoclonal antibody, clone 3G7

Catalog # RAB03110      Size 200 ug

## Applications



### Immunofluorescence

Immunofluorescent staining of human peripheral blood monocytes (PBMs) with C3AR1 recombinant monoclonal antibody, clone 3G7 (Cat # RAB03110). Immunofluorescence analysis of paraformaldehyde fixed human PBMs on Shi-fix™ coverslips- permeabilized with 0.15% Triton and stained with the chimeric r version of RAB03110 at 10 ug/ml for 1h followed by Alexa Fluor® 488 secondary antibody (1 ug/ml)- showing membrane staining. The nuclear stain is DAPI (blue). The isotype control was stained with an anti-Fluorescein antibody (0) followed by Alexa Fluor® 488 secondary antibody.

## Specification

<b>Product Description</b>	Rabbit recombinant monoclonal antibody raised against human C3AR1.
<b>Antibody Species</b>	Rabbit
<b>Immunogen</b>	Original antibody is raised against the 2e loop corresponding to human C3AR1.
<b>Reactivity</b>	Human
<b>Form</b>	Liquid
<b>Isotype</b>	IgG kappa
<b>Recommend Usage</b>	ELISA Flow Cytometry Immunofluorescence The optimal working dilution should be determined by the end user.
<b>Storage Buffer</b>	In PBS with 0.02% Proclin 300

**Storage Instruction**

Store at 4°C for up to 3 months. For longer storage, aliquot and store at -20°C.  
Aliquot to avoid repeated freezing and thawing.

## Applications

- Immunofluorescence

Immunofluorescent staining of human peripheral blood monocytes (PBMs) with C3AR1 recombinant monoclonal antibody, clone 3G7 (Cat # RAB03110).

Immunofluorescence analysis of paraformaldehyde fixed human PBMs on Shi-fix™ coverslips- permeabilized with 0.15% Triton and stained with the chimeric r version of RAB03110 at 10 ug/ml for 1h followed by Alexa Fluor® 488 secondary antibody (1 ug/ml)- showing membrane staining. The nuclear stain is DAPI (blue). The isotype control was stained with an anti-Fluorescein antibody (0) followed by Alexa Fluor® 488 secondary antibody.

- Enzyme-linked Immunoabsorbent Assay

- Flow Cytometry

## Gene Info — C3AR1

Entrez GeneID	<a href="#">719</a>
Gene Name	C3AR1
Gene Alias	AZ3B, C3AR, HNFAG09
Gene Description	complement component 3a receptor 1
Omim ID	<a href="#">605246</a>
Gene Ontology	<a href="#">Hyperlink</a>
Other Designations	complement component 3 receptor 1

## Pathway

- [Complement and coagulation cascades](#)
- [Neuroactive ligand-receptor interaction](#)

## Disease

- [Asthma](#)
- [Bronchial Hyperreactivity](#)
- [Genetic Predisposition to Disease](#)
- [Hypersensitivity](#)
- [Lymphoma](#)
- [Macular Degeneration](#)