

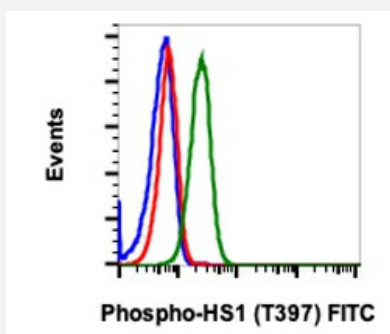
RecomAb™

# HCLS1 recombinant monoclonal antibody, clone HS1Y397-F12 (FITC)

Catalog # RAB03069

Size 100 Reactions

## Applications



### Flow Cytometry

Flow cytometric analysis of Ramos cells untreated and unstained as negative control (blue) or untreated (red) or treated with pervanadate (green) and stained using Phospho-HS1 (Tyr397) FITC conjugated antibody HS1Y397-F12.

## Specification

Product Description	Rabbit recombinant monoclonal antibody raised against human HCLS1.
Antibody Species	Rabbit
Immunogen	A synthetic phospho-peptide corresponding to residues surrounding Tyr397 of human phospho HS1
Reactivity	Human
Form	Liquid
Conjugation	FITC
Purification	Protein A purification, Protein G purification
Isotype	IgG
Recommend Usage	Flow Cytometry The optimal working dilution should be determined by the end user.
Storage Buffer	In PBS (0.2% BSA, 0.09% Sodium azide)

**Storage Instruction**

Store at 4°C. Do not freeze.

**Note**

This product contains sodium azide: a POISONOUS AND HAZARDOUS SUBSTANCE which should be handled by trained staff only.

## Applications

- Flow Cytometry

Flow cytometric analysis of Ramos cells untreated and unstained as negative control (blue) or untreated (red) or treated with pervanadate (green) and stained using Phospho-HS1 (Tyr397) FITC conjugated antibody HS1Y397-F12.

## Gene Info — HCLS1

**Entrez GeneID**[3059](#)**Protein Accession#**[P14317](#)**Gene Name**

HCLS1

**Gene Alias**

CTTNL, HS1

**Gene Description**

hematopoietic cell-specific Lyn substrate 1

**Omim ID**[601306](#)**Gene Ontology**[Hyperlink](#)**Other Designations**

cortactin-like

## Pathway

- [Pathogenic Escherichia coli infection - EHEC](#)
- [Tight junction](#)

## Disease

- [Kidney Failure](#)
- [Lupus Erythematosus](#)