

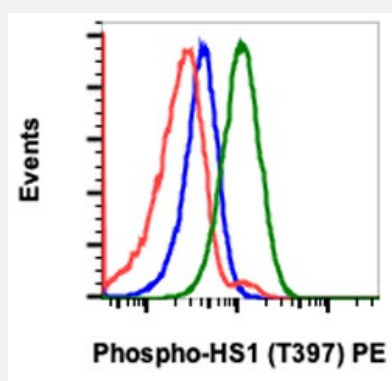
RecomAb™

HCLS1 recombinant monoclonal antibody, clone HS1Y397-F12 (PE)

Catalog # RAB03068

Size 100 Reactions

Applications



Flow Cytometry

Flow cytometric analysis of Ramos cells untreated and unstained as negative control (blue) or untreated (red) or treated with pervanadate (green) and stained using Phospho-HS1 (Tyr397) PE conjugated antibody HS1Y397-F12.

Specification

Product Description	Rabbit recombinant monoclonal antibody raised against human HCLS1.
Antibody Species	Rabbit
Immunogen	A synthetic phospho-peptide corresponding to residues surrounding Tyr397 of human phospho HS1
Reactivity	Human
Form	Liquid
Conjugation	PE
Purification	Protein A purification, Protein G purification
Isotype	IgG
Recommend Usage	Flow Cytometry The optimal working dilution should be determined by the end user.

Storage Buffer	In PBS (0.2% BSA, 0.09% Sodium azide)
Storage Instruction	Store at 4°C. Do not freeze.
Note	This product contains sodium azide: a POISONOUS AND HAZARDOUS SUBSTANCE which should be handled by trained staff only.

Applications

- Flow Cytometry

Flow cytometric analysis of Ramos cells untreated and unstained as negative control (blue) or untreated (red) or treated with pervanadate (green) and stained using Phospho-HS1 (Tyr397) PE conjugated antibody HS1Y397-F12.

Gene Info — HCLS1

Entrez GeneID	3059
Protein Accession#	P14317
Gene Name	HCLS1
Gene Alias	CTTNL, HS1
Gene Description	hematopoietic cell-specific Lyn substrate 1
Omim ID	601306
Gene Ontology	Hyperlink
Other Designations	cortactin-like

Pathway

- [Pathogenic Escherichia coli infection - EHEC](#)
- [Tight junction](#)

Disease

- [Kidney Failure](#)

- [Lupus Erythematosus](#)