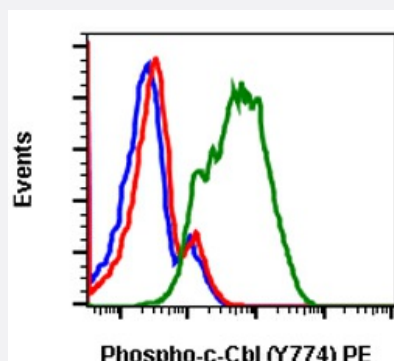


RecomAb™

# CBL recombinant monoclonal antibody, clone CbIY774-R3B8 (PE)

Catalog # RAB03029      Size 100 Reactions

## Applications



### Flow Cytometry

Flow cytometric analysis of Daudi cells cell only (blue) or untreated (red) or treated with IFN $\alpha$  + IL-4 + pervanadate (green) using Phospho-c-Cbl (Tyr774) PE-conjugated antibody CbIY774-R3B8.

## Specification

Product Description	Rabbit recombinant monoclonal antibody raised against human CBL.
Antibody Species	Rabbit
Immunogen	A synthetic phospho-peptide corresponding to residues surrounding Tyr774 of human phospho c-Cbl
Reactivity	Human
Form	Liquid
Conjugation	PE
Purification	Protein A purification, Protein G purification
Isotype	IgG
Recommend Usage	Flow Cytometry The optimal working dilution should be determined by the end user.
Storage Buffer	1X PBS, 0.09% Sodium azide, 0.2% BSA

**Storage Instruction**

Store at 4°C. Do not freeze.

**Note**

This product contains sodium azide: a POISONOUS AND HAZARDOUS SUBSTANCE which should be handled by trained staff only.

## Applications

- Flow Cytometry

Flow cytometric analysis of Daudi cells cell only (blue) or untreated (red) or treated with IFN $\alpha$  + IL-4 + pervanadate (green) using Phospho-c-Cbl (Tyr774) PE-conjugated antibody CbIY774-R3B8.

## Gene Info — CBL

**Entrez GeneID**[867](#)**Protein Accession#**[P22681](#)**Gene Name**

CBL

**Gene Alias**

C-CBL, CBL2, RNF55

**Gene Description**

Cas-Br-M (murine) ecotropic retroviral transforming sequence

**Omim ID**[165360](#)**Gene Ontology**[Hyperlink](#)**Gene Summary**

The cbl oncogene was first identified as part of a transforming retrovirus which induces mouse pre-B and pro-B cell lymphomas. As an adaptor protein for receptor protein-tyrosine kinases, it positively regulates receptor protein-tyrosine kinase ubiquitination in a manner dependent upon its variant SH2 and RING finger domains. Ubiquitination of receptor protein-tyrosine kinases terminates signaling by marking active receptors for degradation. [provided by RefSeq]

**Other Designations**

oncogene CBL2

## Pathway

- [Chronic myeloid leukemia](#)
- [Endocytosis](#)
- [ErbB signaling pathway](#)
- [Insulin signaling pathway](#)

- [Jak-STAT signaling pathway](#)
- [Pathways in cancer](#)
- [T cell receptor signaling pathway](#)
- [Ubiquitin mediated proteolysis](#)

## Disease

- [Diabetes Mellitus](#)
- [Disease Progression](#)
- [Genetic Predisposition to Disease](#)
- [Leukemia](#)
- [Tobacco Use Disorder](#)