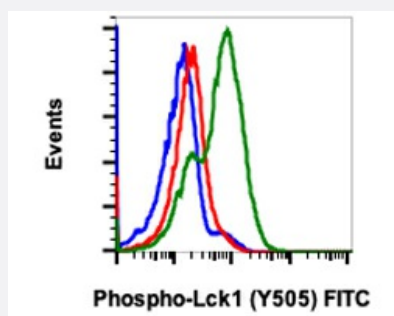


RecomAb™

LCK recombinant monoclonal antibody, clone LckY505-A3 (FITC)

Catalog # RAB03024 Size 100 Reactions

Applications



Flow Cytometry

Flow cytometric analysis of Daudi Human Burkitt's lymphoma cells untreated and unstained as negative control (blue) or untreated (red) or treated with IFNα +IL4 +PV and stained (green) using Phospho-LCK (Y505) antibody LCKY505-A3 FITC conjugate.

Specification

Product Description	Rabbit recombinant monoclonal antibody raised against human LCK.
Antibody Species	Rabbit
Immunogen	A synthetic phospho-peptide corresponding to residues surrounding Tyr505 of human phospho Lck
Reactivity	Human
Form	Liquid
Conjugation	FITC
Purification	Protein A purification, Protein G purification
Isotype	IgG
Recommend Usage	Flow Cytometry The optimal working dilution should be determined by the end user.
Storage Buffer	1X PBS, 0.09% Sodium azide, 0.2% BSA
Storage Instruction	Store at 4°C. Do not freeze.

Note

This product contains sodium azide: a POISONOUS AND HAZARDOUS SUBSTANCE which should be handled by trained staff only.

Applications

- Flow Cytometry

Flow cytometric analysis of Daudi Human Burkitt's lymphoma cells untreated and unstained as negative control (blue) or untreated (red) or treated with IFN α +IL4 +PV and stained (green) using Phospho-LCK (Y505) antibody LCKY505-A3 FITC conjugate.

Gene Info — LCK

Entrez GeneID	3932
---------------	----------------------

Protein Accession#	P06239
--------------------	------------------------

Gene Name	LCK
-----------	-----

Gene Alias	YT16, p56lck, pp58lck
------------	-----------------------

Gene Description	lymphocyte-specific protein tyrosine kinase
------------------	---

Omim ID	153390
---------	------------------------

Gene Ontology	Hyperlink
---------------	---------------------------

Gene Summary	This gene is a member of the Src family of protein tyrosine kinases (PTKs). The encoded protein is a key signaling molecule in the selection and maturation of developing T-cells. It contains N-terminal sites for myristylation and palmitoylation, a PTK domain, and SH2 and SH3 domains which are involved in mediating protein-protein interactions with phosphotyrosine-containing and proline-rich motifs, respectively. The protein localizes to the plasma membrane and pericentrosomal vesicles, and binds to cell surface receptors, including CD4 and CD8, and other signaling molecules. Multiple alternatively spliced variants, encoding the same protein, have been described. [provided by RefSeq]
--------------	---

Other Designations	T-lymphocyte specific protein tyrosine kinase p56lck p56(LSTRA) protein-tyrosine kinase protein tyrosine kinase proto-oncogene tyrosine-protein kinase LCK
--------------------	--

Pathway

- [Natural killer cell mediated cytotoxicity](#)
- [Primary immunodeficiency](#)

- [T cell receptor signaling pathway](#)

Disease

- [HIV Infections](#)
- [Tobacco Use Disorder](#)