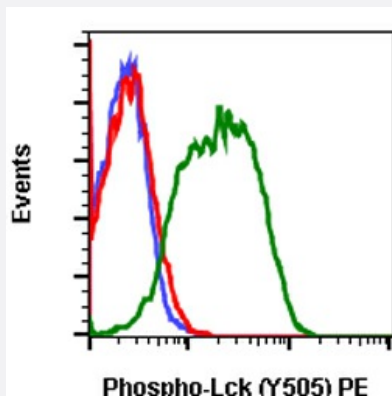


RecomAb™

# LCK recombinant monoclonal antibody, clone LckY505-A3 (PE)

Catalog # RAB03023      Size 100 Reactions

## Applications



### Flow Cytometry

Flow cytometric analysis of Daudi Human Burkitt's lymphoma cells untreated and unstained as negative control (blue) or untreated and stained (red) or treated with IFNα plus IL4 and stained (green) using Phospho-LCK (Y505) antibody LCKY505-A3 PE conjugate.

## Specification

Product Description	Rabbit recombinant monoclonal antibody raised against human LCK.
Antibody Species	Rabbit
Immunogen	A synthetic phospho-peptide corresponding to residues surrounding Tyr505 of human phospho Lck
Reactivity	Human
Form	Liquid
Conjugation	PE
Purification	Protein A purification, Protein G purification
Isotype	IgG
Recommend Usage	Flow Cytometry The optimal working dilution should be determined by the end user.
Storage Buffer	1X PBS, 0.09% Sodium azide, 0.2% BSA

**Storage Instruction**

Store at 4°C. Do not freeze.

**Note**

This product contains sodium azide: a POISONOUS AND HAZARDOUS SUBSTANCE which should be handled by trained staff only.

## Applications

- Flow Cytometry

Flow cytometric analysis of Daudi Human Burkitt's lymphoma cells untreated and unstained as negative control (blue) or untreated and stained (red) or treated with IFN $\alpha$  plus IL4 and stained (green) using Phospho-LCK (Y505) antibody LCKY505-A3 PE conjugate.

## Gene Info — LCK

**Entrez GeneID**[3932](#)**Protein Accession#**[P06239](#)**Gene Name**

LCK

**Gene Alias**

YT16, p56lck, pp58lck

**Gene Description**

lymphocyte-specific protein tyrosine kinase

**Omim ID**[153390](#)**Gene Ontology**[Hyperlink](#)**Gene Summary**

This gene is a member of the Src family of protein tyrosine kinases (PTKs). The encoded protein is a key signaling molecule in the selection and maturation of developing T-cells. It contains N-terminal sites for myristylation and palmitoylation, a PTK domain, and SH2 and SH3 domains which are involved in mediating protein-protein interactions with phosphotyrosine-containing and proline-rich motifs, respectively. The protein localizes to the plasma membrane and pericentrosomal vesicles, and binds to cell surface receptors, including CD4 and CD8, and other signaling molecules. Multiple alternatively spliced variants, encoding the same protein, have been described. [provided by RefSeq]

**Other Designations**

T-lymphocyte specific protein tyrosine kinase p56lck|p56(LSTRA) protein-tyrosine kinase|protein tyrosine kinase|proto-oncogene tyrosine-protein kinase LCK

## Pathway

- [Natural killer cell mediated cytotoxicity](#)

- [Primary immunodeficiency](#)
- [T cell receptor signaling pathway](#)

## Disease

- [HIV Infections](#)
- [Tobacco Use Disorder](#)