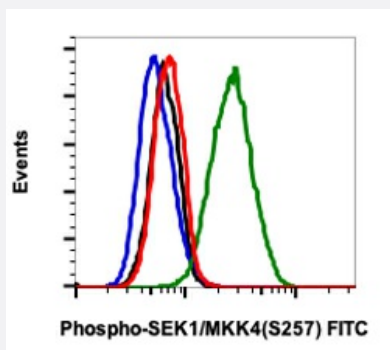


RecomAb™

MAP2K4 recombinant monoclonal antibody, clone SEK1MKK4S257-C5 (FITC)

Catalog # RAB02995 Size 100 Reactions

Applications



Flow Cytometry

Flow cytometric analysis of 293T cells treated with lambda phosphatase (red) or treated with UV (100 mJ/cm²)+TPA (200nM, 1 hr recovery ; green) using Phospho-SEK1/MKK4 (Ser257) (C5) Rabbit mAb (FITC Conjugate) SEK1MKK4S257-C5, or concentration-matched Rabbit (G9) mAb IgG Isotype Control (FITC Conjugate) for cells treated with lambda phosphatase (black) or treated with UV+TPA (blue).

Specification

Product Description	Rabbit recombinant monoclonal antibody raised against human MAP2K4.
Antibody Species	Rabbit
Immunogen	A synthetic phospho-peptide corresponding to residues surrounding Ser257 of human phospho SEK 1/MKK4
Reactivity	Human
Form	Liquid
Conjugation	FITC
Purification	Protein A purification, Protein G purification
Isotype	IgG
Recommend Usage	Flow Cytometry The optimal working dilution should be determined by the end user.

Storage Buffer	1X PBS, 0.09% Sodium azide, 0.2% BSA
Storage Instruction	Store at 4°C. Do not freeze.
Note	This product contains sodium azide: a POISONOUS AND HAZARDOUS SUBSTANCE which should be handled by trained staff only.

Applications

- Flow Cytometry

Flow cytometric analysis of 293T cells treated with lambda phosphatase (red) or treated with UV (100 mJ/cm²)+TPA (200nM, 1 hr recovery ; green) using Phospho-SEK1/MKK4 (Ser257) (C5) Rabbit mAb (FITC Conjugate) SEK1MKK4S257-C5, or concentration-matched Rabbit (G9) mAb IgG Isotype Control (FITC Conjugate) for cells treated with lambda phosphatase (black) or treated with UV+TPA (blue).

Gene Info — MAP2K4

Entrez GeneID	6416
Protein Accession#	P45985
Gene Name	MAP2K4
Gene Alias	JNKK, JNKK1, MAPKK4, MEK4, MKK4, PRKMK4, SEK1, SERK1
Gene Description	mitogen-activated protein kinase kinase 4
Omim ID	601335
Gene Ontology	Hyperlink
Gene Summary	This gene encodes a dual specificity protein kinase that belongs to the Ser/Thr protein kinase family. This kinase is a direct activator of MAP kinases in response to various environmental stresses or mitogenic stimuli. It has been shown to activate MAPK8/JNK1, MAPK9/JNK2, and MAPK14/p38, but not MAPK1/ERK2 or MAPK3/ERK3. This kinase is phosphorylated, and thus activated by MAP3K1/MEKK. The knockout studies in mice suggested the roles of this kinase in mediating survival signal in T cell development, as well as in the organogenesis of liver. [provided by RefSeq]
Other Designations	JNK activating kinase 1 JNK-activated kinase 1 MAP kinase kinase 4 MAPK/ERK kinase 4 SAPK/ERK kinase 1 c-Jun N-terminal kinase kinase 1 dual specificity mitogen-activated protein kinase kinase 4

Pathway

- [Epithelial cell signaling in Helicobacter pylori infection](#)
- [ErbB signaling pathway](#)
- [Fc epsilon RI signaling pathway](#)
- [GnRH signaling pathway](#)
- [MAPK signaling pathway](#)
- [Toll-like receptor signaling pathway](#)

Disease

- [Colorectal Neoplasms](#)
- [Genetic Predisposition to Disease](#)
- [Lung Neoplasms](#)
- [Pancreatic cancer](#)
- [Pancreatic Neoplasms](#)