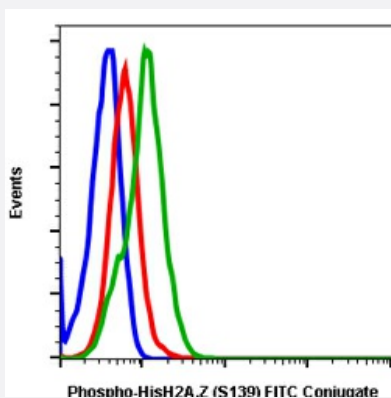


RecomAb™

H2AX recombinant monoclonal antibody, clone HisH2AXS139-1B3 (FITC)

Catalog # RAB02968 Size 100 Reactions

Applications



Flow Cytometry

Flow cytometric analysis of 293T cells unstained cells (blue) or stained untreated (red) or treated with UV and TPA (green) using Phospho-Histone H2A.X (Ser139) antibody HisH2AXS139-1B3 FITC-conjugated.

Specification

Product Description	Rabbit recombinant monoclonal antibody raised against human H2AX.
Antibody Species	Rabbit
Immunogen	A synthetic phospho-peptide corresponding to residues surrounding Ser139 of human phospho histone H2A.X.
Reactivity	Human
Form	Liquid
Conjugation	FITC
Purification	Protein A purification, Protein G purification
Isotype	IgG

Recommend Usage	Flow Cytometry The optimal working dilution should be determined by the end user.
Storage Buffer	1X PBS, 0.09% Sodium azide, 0.2% BSA
Storage Instruction	Store at 4°C. Do not freeze.
Note	This product contains sodium azide: a POISONOUS AND HAZARDOUS SUBSTANCE which should be handled by trained staff only.

Applications

- Flow Cytometry

Flow cytometric analysis of 293T cells unstained cells (blue) or stained untreated (red) or treated with UV and TPA (green) using Phospho-Histone H2A.X (Ser139) antibody HisH2AXS139-1B3 FITC-conjugated.

Gene Info — H2AFX

Entrez GeneID	3014
Protein Accession#	P16104
Gene Name	H2AFX
Gene Alias	H2A.X, H2A/X, H2AX
Gene Description	H2A histone family, member X
Omim ID	601772
Gene Ontology	Hyperlink
Gene Summary	Histones are basic nuclear proteins that are responsible for the nucleosome structure of the chromosomal fiber in eukaryotes. Two molecules of each of the four core histones (H2A, H2B, H3, and H4) form an octamer, around which approximately 146 bp of DNA is wrapped in repeating units, called nucleosomes. The linker histone, H1, interacts with linker DNA between nucleosomes and functions in the compaction of chromatin into higher order structures. This gene encodes a member of the histone H2A family, and generates two transcripts through the use of the conserved stem-loop termination motif, and the polyA addition motif. [provided by RefSeq]
Other Designations	H2AX histone

Pathway

- [Systemic lupus erythematosus](#)

Disease

- [Azoospermia](#)
- [Breast cancer](#)
- [Breast Neoplasms](#)
- [DNA Damage](#)
- [Genetic Predisposition to Disease](#)
- [Lymphoma](#)
- [Oligospermia](#)
- [Ovarian cancer](#)
- [Prostate cancer](#)
- [Prostatic Neoplasms](#)
- [Urinary Bladder Neoplasms](#)