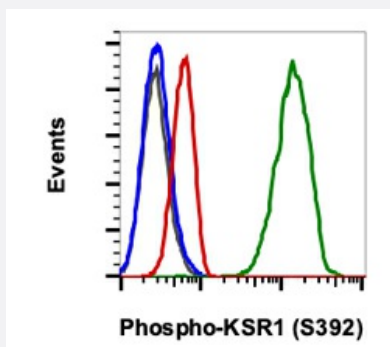


RecomAb™

KSR1 recombinant monoclonal antibody, clone KSR1S392-3A4 (PE)

Catalog # RAB02963 Size 100 Reactions

Applications



Flow Cytometry

Flow cytometric analysis of HeLa cells, untreated (green) or treated with phosphatase (red) using 0.5 ug/mL Phospho-KSR1 (Ser392) antibody KSR1S392-3A4 or concentration matched isotype control, for untreated cells (gray) or treated with phosphatase

Specification

Product Description	Rabbit recombinant monoclonal antibody raised against human KSR1.
Antibody Species	Rabbit
Immunogen	A synthetic phosphor-peptide corresponding to residues surrounding Ser392 of human phospho KSR1
Reactivity	Human
Form	Liquid
Conjugation	PE
Purification	Protein A purification, Protein G purification
Isotype	IgG
Recommend Usage	Flow Cytometry The optimal working dilution should be determined by the end user.

Storage Buffer	1X PBS, 0.09% Sodium azide, 0.2% BSA
Storage Instruction	Store at 4°C. Do not freeze.
Note	This product contains sodium azide: a POISONOUS AND HAZARDOUS SUBSTANCE which should be handled by trained staff only.

Applications

- Flow Cytometry

Flow cytometric analysis of HeLa cells, untreated (green) or treated with phosphatase (red) using 0.5 ug/mL Phospho-KSR1 (Ser392) antibody KSR1S392-3A4 or concentration matched isotype control, for untreated cells (gray) or treated with phosphatase

Gene Info — KSR1

Entrez GeneID	8844
Protein Accession#	Q8IVT5
Gene Name	KSR1
Gene Alias	KSR, RSU2
Gene Description	kinase suppressor of ras 1
Omim ID	601132
Gene Ontology	Hyperlink
Other Designations	kinase suppressor of ras

Disease

- [Tobacco Use Disorder](#)