

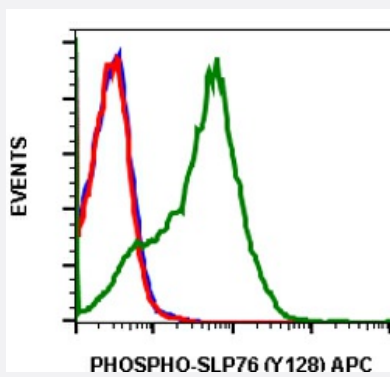
RecomAb™

LCP2 recombinant monoclonal antibody, clone SLP76Y128-3F8 (APC)

Catalog # RAB02947

Size 100 Reactions

Applications



Flow Cytometry

Flow cytometric analysis of Ramos cells unstained untreated Ramos cells negative control (blue) or stained untreated (red) or treated cells with pervanadate (green) using phospho-SLP-76 (Tyr128) antibody SLP76Y128-3F8 APC conjugate.

Specification

Product Description	Rabbit recombinant monoclonal antibody raised against human LCP2.
Antibody Species	Rabbit
Immunogen	A synthetic phospho-peptide corresponding to residues surrounding Tyr128 of human phospho SLP-76
Reactivity	Human
Form	Liquid
Conjugation	APC
Purification	Protein A purification, Protein G purification
Isotype	IgG
Recommend Usage	Flow Cytometry The optimal working dilution should be determined by the end user.

Storage Buffer	1X PBS, 0.09% Sodium azide, 0.2% BSA
Storage Instruction	Store at 4°C. Do not freeze.
Note	This product contains sodium azide: a POISONOUS AND HAZARDOUS SUBSTANCE which should be handled by trained staff only.

Applications

- Flow Cytometry

Flow cytometric analysis of Ramos cells unstained untreated Ramos cells negative control (blue) or stained untreated (red) or treated cells with pervanadate (green) using phospho-SLP-76 (Tyr128) antibody SLP76Y128-3F8 APC conjugate.

Gene Info — LCP2

Entrez GeneID	3937
Protein Accession#	Q13094
Gene Name	LCP2
Gene Alias	SLP-76, SLP76
Gene Description	lymphocyte cytosolic protein 2 (SH2 domain containing leukocyte protein of 76kDa)
Omim ID	601603
Gene Ontology	Hyperlink
Gene Summary	SLP-76 was originally identified as a substrate of the ZAP-70 protein tyrosine kinase following T cell receptor (TCR) ligation in the leukemic T cell line Jurkat. The SLP-76 locus has been localized to human chromosome 5q33 and the gene structure has been partially characterized in mice. The human and murine cDNAs both encode 533 amino acid proteins that are 72% identical and comprised of three modular domains. The NH2-terminus contains an acidic region that includes a PEST domain and several tyrosine residues which are phosphorylated following TCR ligation. SLP-76 also contains a central proline-rich domain and a COOH-terminal SH2 domain. A number of additional proteins have been identified that associate with SLP-76 both constitutively and inducibly following receptor ligation, supporting the notion that SLP-76 functions as an adaptor or scaffold protein. Studies using SLP-76 deficient T cell lines or mice have provided strong evidence that SLP-76 plays a positive role in promoting T cell development and activation as well as mast cell and platelet function. [provided by RefSeq]
Other Designations	76 kDa tyrosine phosphoprotein SH2 domain-containing leukocyte protein of 76kD lymphocyte cytosolic protein 2 lymphocyte cytosolic protein 2 (SH2 domain-containing leukocyte protein of 76kDa)

Pathway

- [Fc epsilon RI signaling pathway](#)
- [Natural killer cell mediated cytotoxicity](#)
- [T cell receptor signaling pathway](#)

Disease

- [Disease Progression](#)
- [Disease Susceptibility](#)
- [HIV Infections](#)
- [Lymphedema](#)