

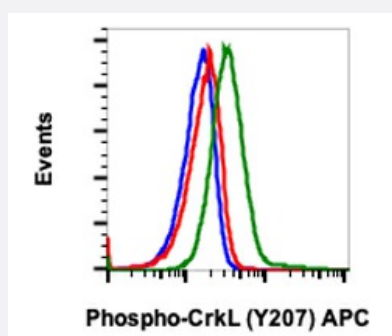
RecomAb™

CRKL recombinant monoclonal antibody, clone CrkLY207-G4 (APC)

Catalog # RAB02926

Size 100 Reactions

Applications



Flow Cytometry

Flow cytometric analysis of K562 cells treated with imatinib and unstained (blue) as negative control or treated with imatinib (red) or treated with pervanadate (green) and stained using Phospho-CrkL (Tyr207) APC conjugated antibody CrkLY207-G4.

Specification

Product Description	Rabbit recombinant monoclonal antibody raised against human CRKL.
Antibody Species	Rabbit
Immunogen	A synthetic phospho-peptide corresponding to residues surrounding Tyr207 of human phospho CrkL
Reactivity	Human
Form	Liquid
Conjugation	APC
Purification	Protein A purification, Protein G purification
Isotype	IgG
Recommend Usage	Flow Cytometry The optimal working dilution should be determined by the end user.
Storage Buffer	1X PBS, 0.09% Sodium azide, 0.2% BSA

Storage Instruction

Store at 4°C. Do not freeze.

Note

This product contains sodium azide: a POISONOUS AND HAZARDOUS SUBSTANCE which should be handled by trained staff only.

Applications

- Flow Cytometry

Flow cytometric analysis of K562 cells treated with imatinib and unstained (blue) as negative control or treated with imatinib (red) or treated with pervanadate (green) and stained using Phospho-CrkL (Tyr207) APC conjugated antibody CrkLY207-G4.

Gene Info — CRKL

Entrez GeneID[1399](#)**Protein Accession#**[P46109](#)**Gene Name**

CRKL

Gene Alias

-

Gene Description

v-crk sarcoma virus CT10 oncogene homolog (avian)-like

Omim ID[602007](#)**Gene Ontology**[Hyperlink](#)**Gene Summary**

This gene encodes a protein kinase containing SH2 and SH3 (src homology) domains which has been shown to activate the RAS and JUN kinase signaling pathways and transform fibroblasts in a RAS-dependent fashion. It is a substrate of the BCR-ABL tyrosine kinase, plays a role in fibroblast transformation by BCR-ABL, and may be oncogenic

Other Designations

v-crk avian sarcoma virus CT10 oncogene homolog-like

Pathway

- [Chemokine signaling pathway](#)
- [Chronic myeloid leukemia](#)
- [ErbB signaling pathway](#)
- [Fc gamma R-mediated phagocytosis](#)

- [Focal adhesion](#)
- [Insulin signaling pathway](#)
- [MAPK signaling pathway](#)
- [Neurotrophin signaling pathway](#)
- [Pathways in cancer](#)
- [Regulation of actin cytoskeleton](#)
- [Renal cell carcinoma](#)

Disease

- [Cardiovascular Diseases](#)
- [Diabetes Mellitus](#)
- [Edema](#)