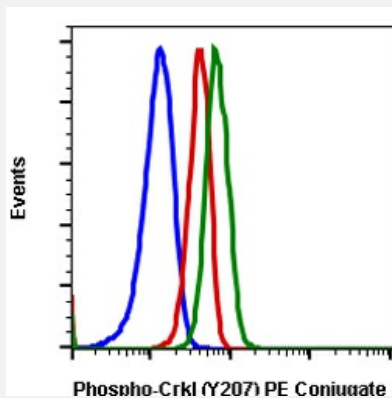


RecomAb™

# CRKL recombinant monoclonal antibody, clone CrkLY207-G4 (PE)

Catalog # RAB02924      Size 100 Reactions

## Applications



### Flow Cytometry

Flow cytometric analysis of K562 cells secondary antibody only negative control (blue) or imatinib (red) or treated with pervanadate (green) using Phospho-CrkL (Tyr207) PE conjugated antibody CrkLY207-G4.

## Specification

|                     |  |
|---------------------|--|
| Product Description | Rabbit recombinant monoclonal antibody raised against human CRKL.                              |
| Antibody Species    | Rabbit   |
| Immunogen           | A synthetic phospho-peptide corresponding to residues surrounding Tyr207 of human phospho CrkL |
| Reactivity          | Human  |
| Form                | Liquid   |
| Conjugation         | PE   |
| Purification        | Protein A purification, Protein G purification   |
| Isotype             | IgG  |
| Recommend Usage     | Flow Cytometry<br>The optimal working dilution should be determined by the end user.           |
| Storage Buffer      | 1X PBS, 0.09% Sodium azide, 0.2% BSA   |

**Storage Instruction**

Store at 4°C. Do not freeze.

**Note**

This product contains sodium azide: a POISONOUS AND HAZARDOUS SUBSTANCE which should be handled by trained staff only.

## Applications

- Flow Cytometry

Flow cytometric analysis of K562 cells secondary antibody only negative control (blue) or imatinib (red) or treated with pervanadate (green) using Phospho-CrkL (Tyr207) PE conjugated antibody CrkLY207-G4.

## Gene Info — CRKL

**Entrez GeneID**[1399](#)**Protein Accession#**[P46109](#)**Gene Name**

CRKL

**Gene Alias**

-

**Gene Description**

v-crk sarcoma virus CT10 oncogene homolog (avian)-like

**Omim ID**[602007](#)**Gene Ontology**[Hyperlink](#)**Gene Summary**

This gene encodes a protein kinase containing SH2 and SH3 (src homology) domains which has been shown to activate the RAS and JUN kinase signaling pathways and transform fibroblasts in a RAS-dependent fashion. It is a substrate of the BCR-ABL tyrosine kinase, plays a role in fibroblast transformation by BCR-ABL, and may be oncogenic

**Other Designations**

v-crk avian sarcoma virus CT10 oncogene homolog-like

## Pathway

- [Chemokine signaling pathway](#)
- [Chronic myeloid leukemia](#)
- [ErbB signaling pathway](#)
- [Fc gamma R-mediated phagocytosis](#)

- [Focal adhesion](#)
- [Insulin signaling pathway](#)
- [MAPK signaling pathway](#)
- [Neurotrophin signaling pathway](#)
- [Pathways in cancer](#)
- [Regulation of actin cytoskeleton](#)
- [Renal cell carcinoma](#)

## Disease

- [Cardiovascular Diseases](#)
- [Diabetes Mellitus](#)
- [Edema](#)