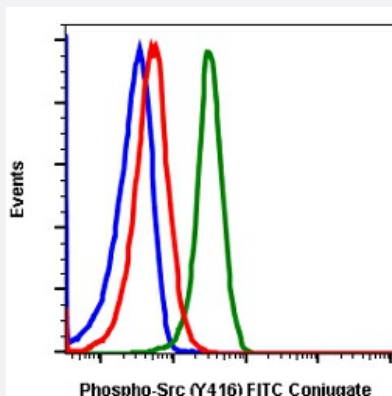


RecomAb™

SRC recombinant monoclonal antibody, clone SrcY416-C4 (FTIC)

Catalog # RAB02916 Size 100 Reactions

Applications



Flow Cytometry

Flow cytometric analysis of U937 cells unstained untreated cells as negative control (blue) or stained untreated (red) or treated with IFNα IL4 and pervanadate (green) using Phospho-Src (Tyr416) antibody SrcY416-C4 FITC conjugate.

Specification

Product Description	Rabbit recombinant monoclonal antibody raised against human SRC.
Antibody Species	Rabbit
Immunogen	A synthetic phospho-peptide corresponding to residues surrounding Tyr416 of human phospho Src
Reactivity	Human
Form	Liquid
Conjugation	FITC
Purification	Protein A purification, Protein G purification
Isotype	IgG
Recommend Usage	Flow Cytometry The optimal working dilution should be determined by the end user.
Storage Buffer	1X PBS, 0.09% Sodium azide, 0.2% BSA

Storage Instruction

Store at 4°C. Do not freeze.

Note

This product contains sodium azide: a POISONOUS AND HAZARDOUS SUBSTANCE which should be handled by trained staff only.

Applications

- Flow Cytometry

Flow cytometric analysis of U937 cells unstained untreated cells as negative control (blue) or stained untreated (red) or treated with IFN α IL4 and pervanadate (green) using Phospho-Src (Tyr416) antibody SrcY416-C4 FITC conjugate.

Gene Info — SRC

Entrez GeneID[6714](#)**Protein Accession#**[P12931](#)**Gene Name**

SRC

Gene Alias

ASV, SRC1, c-SRC, p60-Src

Gene Description

v-src sarcoma (Schmidt-Ruppin A-2) viral oncogene homolog (avian)

Omim ID[190090](#)**Gene Ontology**[Hyperlink](#)**Gene Summary**

This gene is highly similar to the v-src gene of Rous sarcoma virus. This proto-oncogene may play a role in the regulation of embryonic development and cell growth. The protein encoded by this gene is a tyrosine-protein kinase whose activity can be inhibited by phosphorylation by c-SRC kinase. Mutations in this gene could be involved in the malignant progression of colon cancer. Two transcript variants encoding the same protein have been found for this gene. [provided by RefSeq]

Other Designations

OTTHUMP00000174476|OTTHUMP00000174477|proto-oncogene tyrosine-protein kinase SRC|protooncogene SRC, Rous sarcoma|tyrosine kinase pp60c-src|tyrosine-protein kinase SRC-1

Pathway

- [Adherens junction](#)
- [Endocytosis](#)
- [Epithelial cell signaling in Helicobacter pylori infection](#)

- [ErbB signaling pathway](#)
- [Focal adhesion](#)
- [Gap junction](#)
- [GnRH signaling pathway](#)
- [Tight junction](#)
- [VEGF signaling pathway](#)

Disease

- [Genetic Predisposition to Disease](#)
- [HIV Infections](#)
- [Thyroid Neoplasms](#)