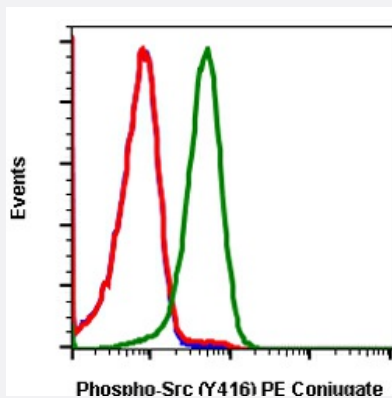


RecomAb™

# SRC recombinant monoclonal antibody, clone SrcY416-C4 (PE)

Catalog # RAB02915      Size 100 Reactions

## Applications



### Flow Cytometry

Flow cytometric analysis of U937 cells unstained untreated cells as negative control (blue) or stained untreated (red) or treated with IFN $\alpha$  IL4 and pervanadate (green) using phospho-Src (Tyr416) antibody SrcY416-C4 PE conjugate.

## Specification

<b>Product Description</b>	Rabbit recombinant monoclonal antibody raised against human SRC.
<b>Antibody Species</b>	Rabbit
<b>Immunogen</b>	A synthetic phospho-peptide corresponding to residues surrounding Tyr416 of human phospho Src
<b>Reactivity</b>	Human
<b>Form</b>	Liquid
<b>Conjugation</b>	PE
<b>Purification</b>	Protein A purification, Protein G purification
<b>Isotype</b>	IgG
<b>Recommend Usage</b>	Flow Cytometry The optimal working dilution should be determined by the end user.
<b>Storage Buffer</b>	1X PBS, 0.09% Sodium azide, 0.2% BSA

**Storage Instruction**

Store at 4°C. Do not freeze.

**Note**

This product contains sodium azide: a POISONOUS AND HAZARDOUS SUBSTANCE which should be handled by trained staff only.

## Applications

- Flow Cytometry

Flow cytometric analysis of U937 cells unstained untreated cells as negative control (blue) or stained untreated (red) or treated with IFN $\alpha$  IL4 and pervanadate (green) using phospho-Src (Tyr416) antibody SrcY416-C4 PE conjugate.

## Gene Info — SRC

**Entrez GeneID**[6714](#)**Protein Accession#**[P12931](#)**Gene Name**

SRC

**Gene Alias**

ASV, SRC1, c-SRC, p60-Src

**Gene Description**

v-src sarcoma (Schmidt-Ruppin A-2) viral oncogene homolog (avian)

**Omim ID**[190090](#)**Gene Ontology**[Hyperlink](#)**Gene Summary**

This gene is highly similar to the v-src gene of Rous sarcoma virus. This proto-oncogene may play a role in the regulation of embryonic development and cell growth. The protein encoded by this gene is a tyrosine-protein kinase whose activity can be inhibited by phosphorylation by c-SRC kinase. Mutations in this gene could be involved in the malignant progression of colon cancer. Two transcript variants encoding the same protein have been found for this gene. [provided by RefSeq]

**Other Designations**

OTTHUMP00000174476|OTTHUMP00000174477|proto-oncogene tyrosine-protein kinase SRC|protooncogene SRC, Rous sarcoma|tyrosine kinase pp60c-src|tyrosine-protein kinase SRC-1

## Pathway

- [Adherens junction](#)
- [Endocytosis](#)
- [Epithelial cell signaling in Helicobacter pylori infection](#)

- [ErbB signaling pathway](#)
- [Focal adhesion](#)
- [Gap junction](#)
- [GnRH signaling pathway](#)
- [Tight junction](#)
- [VEGF signaling pathway](#)

## Disease

- [Genetic Predisposition to Disease](#)
- [HIV Infections](#)
- [Thyroid Neoplasms](#)