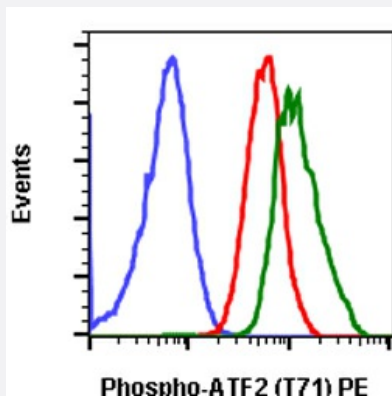


RecomAb™

ATF2 recombinant monoclonal antibody, clone ATF2T71-G3 (PE)

Catalog # RAB02906 Size 100 Reactions

Applications



Flow Cytometry

Flow cytometric analysis of Jurkat cells secondary antibody only negative control (blue) or untreated (red) or treated with anisomycin (green) using Phospho-ATF-2 (Thr71) PE conjugated antibody ATF2T71-G3.

Specification

Product Description	Rabbit recombinant monoclonal antibody raised against human ATF2.
Antibody Species	Rabbit
Immunogen	A synthetic phospho-peptide corresponding to residues surrounding Thr71 of human phospho ATF2
Reactivity	Human
Form	Liquid
Conjugation	PE
Purification	Protein A purification, Protein G purification
Isotype	IgG
Recommend Usage	Flow Cytometry The optimal working dilution should be determined by the end user.
Storage Buffer	1X PBS, 0.09% Sodium azide, 0.2% BSA

Storage Instruction

Store at 4°C. Do not freeze.

Note

This product contains sodium azide: a POISONOUS AND HAZARDOUS SUBSTANCE which should be handled by trained staff only.

Applications

- Flow Cytometry

Flow cytometric analysis of Jurkat cells secondary antibody only negative control (blue) or untreated (red) or treated with anisomycin (green) using Phospho-ATF-2 (Thr71) PE conjugated antibody ATF2T71-G3.

Gene Info — ATF2

Entrez GeneID[1386](#)**Protein Accession#**[P15366](#)**Gene Name**

ATF2

Gene Alias

CRE-BP1, CREB2, HB16, MGC111558, TREB7

Gene Description

activating transcription factor 2

Omim ID[123811](#)**Gene Ontology**[Hyperlink](#)**Gene Summary**

This gene encodes a transcription factor that is a member of the leucine zipper family of DNA binding proteins. This protein binds to the cAMP-responsive element (CRE), an octameric palindrome. The protein forms a homodimer or heterodimer with c-Jun and stimulates CRE-dependent transcription. The protein is also a histone acetyltransferase (HAT) that specifically acetylates histones H2B and H4 in vitro; thus it may represent a class of sequence-specific factors that activate transcription by direct effects on chromatin components. Additional transcript variants have been identified but their biological validity has not been determined. [provided by RefSeq]

Other Designations

OTTHUMP00000163262|activating transcription factor 2 splice variant ATF2-var2|cAMP responsive element binding protein 2, formerly

Pathway

- [MAPK signaling pathway](#)

Disease

- [Bipolar Disorder](#)
- [Cardiovascular Diseases](#)
- [Diabetes Mellitus](#)
- [Edema](#)
- [Genetic Predisposition to Disease](#)
- [Schizophrenia](#)
- [Tobacco Use Disorder](#)