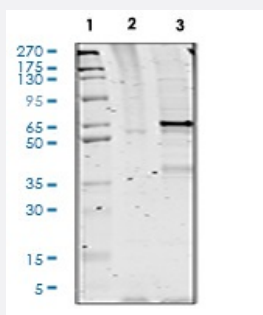


RecomAb™

MARCKS recombinant monoclonal antibody, clone MARCKSS167170-C9

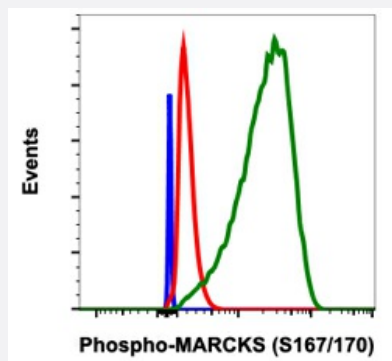
Catalog # RAB02861 Size 200 uL

Applications



Western Blot

Western blot analysis of NIH3T3 cell extract untreated or treated with TPA using Phospho-MARCKS (Ser167/170) antibody MARCKSS167170-C9 at 0.1 ug/mL.



Flow Cytometry

Flow cytometric analysis of C6 cells, secondary antibody only negative control (blue) or treated with staurosporine (red) or with UV+TPA (green) using Phospho-MARCKS (Ser167/170) antibody MARCKSS167170-C9 at 0.01 ug/mL.

Specification

Product Description	Rabbit recombinant monoclonal antibody raised against human MARCKS.
Antibody Species	Rabbit
Immunogen	A synthetic phospho-peptide corresponding to residues surrounding Ser167/170 of human phospho MARCKS
Reactivity	Human

Form	Liquid
Purification	Protein A+G
Isotype	Rabbit IgG1k
Recommend Usage	Flow Cytometry Western Blot The optimal working dilution should be determined by the end user.
Storage Buffer	1X PBS, 0.02% Sodium azide, 50% Glycerol, 0.1% BSA
Storage Instruction	Store at -20°C. Aliquot to avoid repeated freezing and thawing.
Note	This product contains sodium azide: a POISONOUS AND HAZARDOUS SUBSTANCE which should be handled by trained staff only.

Applications

- Western Blot

Western blot analysis of NIH3T3 cell extract untreated or treated with TPA using Phospho-MARCKS (Ser167/170) antibody MARCKSS167170-C9 at 0.1 ug/mL.

- Flow Cytometry

Flow cytometric analysis of C6 cells, secondary antibody only negative control (blue) or treated with staurosporine (red) or with UV+TPA (green) using Phospho-MARCKS (Ser167/170) antibody MARCKSS167170-C9 at 0.01 ug/mL.

Gene Info — MARCKS

Entrez GeneID	4082
Protein Accession#	P29966
Gene Name	MARCKS
Gene Alias	80K-L, FLJ14368, FLJ90045, MACS, PKCSL, PRKCSL
Gene Description	myristoylated alanine-rich protein kinase C substrate
Omim ID	177061
Gene Ontology	Hyperlink

Gene Summary

The protein encoded by this gene is a substrate for protein kinase C. It is localized to the plasma membrane and is an actin filament crosslinking protein. Phosphorylation by protein kinase C or binding to calcium-calmodulin inhibits its association with actin and with the plasma membrane, leading to its presence in the cytoplasm. The protein is thought to be involved in cell motility, phagocytosis, membrane trafficking and mitogenesis. [provided by RefSeq]

Other Designations

OTTHUMP00000017045|myristoylated alanine-rich protein kinase C substrate (MARCKS, 80K-L)|phosphomyristin

Pathway

- [Fc gamma R-mediated phagocytosis](#)