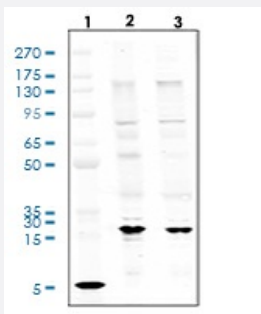


RecomAb™

HSPB1 recombinant monoclonal antibody, clone HSP27S82-CB2

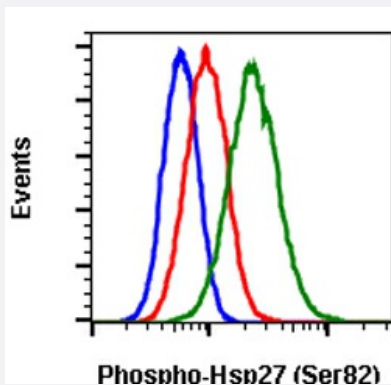
Catalog # RAB02849 Size 200 uL

Applications



Western Blot

Western blot analysis of HeLa cell extract, untreated or treated with UV plus TPA using Phospho-HSP27 (Ser82) antibody HSP27S82-CB2 at 5 ng/mL.



Flow Cytometry

Flow cytometric analysis of HeLa cells unstained and untreated cells as as negative control (blue) or untreated (red) or treated with UV and TPA (green) using Phospho-HSP27-CB2 (Ser82) antibody HSP27S82-CB2 at 1.0 ng/mL.

Specification

Product Description	Rabbit recombinant monoclonal antibody raised against human HSPB1.
Antibody Species	Rabbit
Immunogen	A synthetic phospho-peptide corresponding to residues surrounding Ser82 of human phospho Hsp27
Reactivity	Human
Form	Liquid

Purification	Protein A+G
Isotype	Rabbit IgG1k
Recommend Usage	Flow Cytometry Western Blot The optimal working dilution should be determined by the end user.
Storage Buffer	1X PBS, 0.02% Sodium azide, 50% Glycerol, 0.1% BSA
Storage Instruction	Store at -20°C. Aliquot to avoid repeated freezing and thawing.
Note	This product contains sodium azide: a POISONOUS AND HAZARDOUS SUBSTANCE which should be handled by trained staff only.

Applications

- Western Blot

Western blot analysis of HeLa cell extract, untreated or treated with UV plus TPA using Phospho-HSP27 (Ser82) antibody HSP27S82-CB2 at 5 ng/mL.

- Flow Cytometry

Flow cytometric analysis of HeLa cells unstained and untreated cells as as negative control (blue) or untreated (red) or treated with UV and TPA (green) using Phospho-HSP27-CB2 (Ser82) antibody HSP27S82-CB2 at 1.0 ng/mL.

Gene Info — HSPB1

Entrez GeneID	3315
Protein Accession#	P04792
Gene Name	HSPB1
Gene Alias	CMT2F, DKFZp586P1322, HMN2B, HS.76067, HSP27, HSP28, Hsp25, SRP27
Gene Description	heat shock 27kDa protein 1
Omim ID	602195 606595 608634
Gene Ontology	Hyperlink

Gene Summary

The protein encoded by this gene is induced by environmental stress and developmental changes . The encoded protein is involved in stress resistance and actin organization and translocates from the cytoplasm to the nucleus upon stress induction. Defects in this gene are a cause of Charcot-Marie-Tooth disease type 2F (CMT2F) and distal hereditary motor neuropathy (dHMN). [provided by RefSeq]

Other Designations

OTTHUMP00000024846|estrogen-regulated 24 kDa protein|heat shock 27kD protein 1|heat shock protein beta-1|stress-responsive protein 27

Pathway

- [MAPK signaling pathway](#)
- [VEGF signaling pathway](#)

Disease

- [Adenocarcinoma](#)
- [Carcinoma](#)
- [Charcot-Marie-Tooth Disease](#)
- [Diabetic Nephropathies](#)
- [Genetic Predisposition to Disease](#)
- [Lung Neoplasms](#)
- [Small Cell Lung Carcinoma](#)