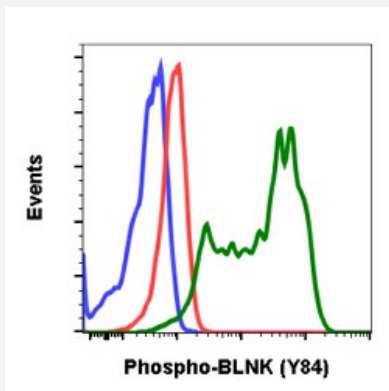


RecomAb™

BLNK recombinant monoclonal antibody, clone BLNKY84-H4

Catalog # RAB02833 Size 200 uL

Applications



Flow Cytometry

Flow cytometric analysis of Daudi cells secondary antibody only negative control (blue) or untreated (red) or treated with IFNα + IL-4 + pervanadate (green) using Phospho-BLNK (Tyr84) antibody BLNKY84-H4 at 0.01 ug/mL.

Specification

Product Description	Rabbit recombinant monoclonal antibody raised against human BLNK.
Antibody Species	Rabbit
Immunogen	A synthetic phospho-peptide corresponding to residues surrounding Tyr84 of human phospho BLNK
Reactivity	Human
Form	Liquid
Purification	Protein A+G
Isotype	Rabbit IgG1k
Recommend Usage	Flow Cytometry The optimal working dilution should be determined by the end user.
Storage Buffer	1X PBS, 0.02% Sodium azide, 50% Glycerol, 0.1% BSA

Storage Instruction

Store at -20°C.
Aliquot to avoid repeated freezing and thawing.

Note

This product contains sodium azide: a POISONOUS AND HAZARDOUS SUBSTANCE which should be handled by trained staff only.

Applications

- Flow Cytometry

Flow cytometric analysis of Daudi cells secondary antibody only negative control (blue) or untreated (red) or treated with IFN α + IL-4 + pervanadate (green) using Phospho-BLNK (Tyr84) antibody BLNKY84-H4 at 0.01 ug/mL.

Gene Info — BLNK

Entrez GeneID [29760](#)

Protein Accession# [Q8WV28](#)

Gene Name BLNK

Gene Alias BASH, BLNK-S, LY57, MGC111051, SLP-65, SLP65

Gene Description B-cell linker

Omim ID [604515](#)

Gene Ontology [Hyperlink](#)

Gene Summary

This gene encodes a cytoplasmic linker or adaptor protein that plays a critical role in B cell development. This protein bridges B cell receptor-associated kinase activation with downstream signaling pathways, thereby affecting various biological functions. The phosphorylation of five tyrosine residues is necessary for this protein to nucleate distinct signaling effectors following B cell receptor activation. Mutations in this gene cause hypoglobulinemia and absent B cells, a disease in which the pro- to pre-B-cell transition is developmentally blocked. Deficiency in this protein has also been shown in some cases of pre-B acute lymphoblastic leukemia. Alternatively spliced transcript variants encoding different isoforms have been found for this gene. [provided by RefSeq]

Other Designations

B cell linker protein|B-cell adapter containing a SH2 domain protein|B-cell adapter containing a Src homology 2 domain protein|OTTHUMP00000020167|Src homology 2 domain-containing leukocyte protein of 65 kDa

Pathway

- [B cell receptor signaling pathway](#)

- [Primary immunodeficiency](#)

Disease

- [Alzheimer Disease](#)
- [Genetic Predisposition to Disease](#)
- [Tobacco Use Disorder](#)