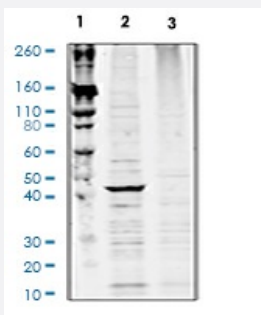


RecomAb™

MAP2K4 recombinant monoclonal antibody, clone SEK1MKK4S257-C5

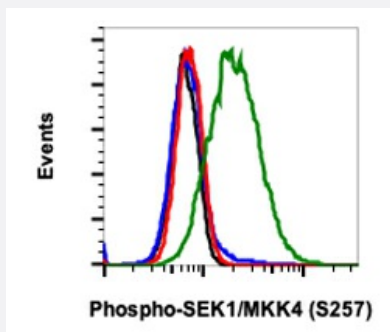
Catalog # RAB02821 Size 200 uL

Applications



Western Blot

Western blot analysis of THP1 cell extract, untreated or treated with sorbitol using phospho-SEK1/MKK4 (Ser257) antibody SEK1MKK4S257-C5 at 0.05 ug/mL.



Flow Cytometry

Flow cytometric analysis of HEK293T cells treated with lambda phosphatase (red) or treated with UV+TPA (green) using Phospho-SEK1/MKK4 (Ser257) (C5) Rabbit mAb, at 0.1 ug/mL, SEK1MKK4S257-C5, or concentration-matched Rabbit (G9) mAb IgG Isotype Control1 for cells treated with phosphatase (black) or treated with UV+TPA (blue).

Specification

Product Description	Rabbit recombinant monoclonal antibody raised against human MAP2K4.
Antibody Species	Rabbit
Immunogen	A synthetic phospho-peptide corresponding to residues surrounding Ser257 of human phospho SEK1/MKK4
Reactivity	Human
Form	Liquid

Purification	Protein A+G
Isotype	Rabbit IgG1k
Recommend Usage	Flow Cytometry Western Blot The optimal working dilution should be determined by the end user.
Storage Buffer	1X PBS, 0.02% Sodium azide, 50% Glycerol, 0.1% BSA
Storage Instruction	Store at -20°C. Aliquot to avoid repeated freezing and thawing.
Note	This product contains sodium azide: a POISONOUS AND HAZARDOUS SUBSTANCE which should be handled by trained staff only.

Applications

- Western Blot

Western blot analysis of THP1 cell extract, untreated or treated with sorbitol using phospho-SEK1/MKK4 (Ser257) antibody SEK1MKK4S257-C5 at 0.05 ug/mL.

- Flow Cytometry

Flow cytometric analysis of HEK293T cells treated with lambda phosphatase (red) or treated with UV+TPA (green) using Phospho-SEK1/MKK4 (Ser257) (C5) Rabbit mAb, at 0.1 ug/mL, SEK1MKK4S257-C5, or concentration-matched Rabbit (G9) mAb IgG Isotype Control1 for cells treated with phosphatase (black) or treated with UV+TPA (blue).

Gene Info — MAP2K4

Entrez GeneID	6416
Protein Accession#	P45985
Gene Name	MAP2K4
Gene Alias	JNKK, JNKK1, MAPKK4, MEK4, MKK4, PRKMK4, SEK1, SERK1
Gene Description	mitogen-activated protein kinase kinase 4
Omim ID	601335
Gene Ontology	Hyperlink

Gene Summary

This gene encodes a dual specificity protein kinase that belongs to the Ser/Thr protein kinase family. This kinase is a direct activator of MAP kinases in response to various environmental stresses or mitogenic stimuli. It has been shown to activate MAPK8/JNK1, MAPK9/JNK2, and MAPK14/p38, but not MAPK1/ERK2 or MAPK3/ERK3. This kinase is phosphorylated, and thus activated by MAP3K1/MEKK. The knockout studies in mice suggested the roles of this kinase in mediating survival signal in T cell development, as well as in the organogenesis of liver. [provided by RefSeq]

Other Designations

JNK activating kinase 1|JNK-activated kinase 1|MAP kinase kinase 4|MAPK/ERK kinase 4|SAPK/ERK kinase 1|c-Jun N-terminal kinase kinase 1|dual specificity mitogen-activated protein kinase kinase 4

Pathway

- [Epithelial cell signaling in Helicobacter pylori infection](#)
- [ErbB signaling pathway](#)
- [Fc epsilon RI signaling pathway](#)
- [GnRH signaling pathway](#)
- [MAPK signaling pathway](#)
- [Toll-like receptor signaling pathway](#)

Disease

- [Colorectal Neoplasms](#)
- [Genetic Predisposition to Disease](#)
- [Lung Neoplasms](#)
- [Pancreatic cancer](#)
- [Pancreatic Neoplasms](#)