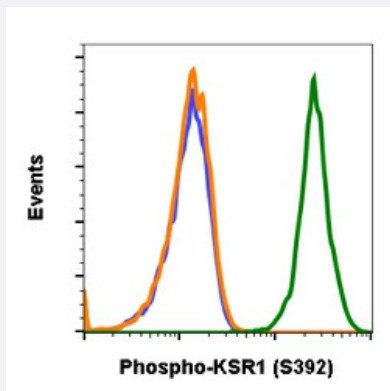


RecomAb™

KSR1 recombinant monoclonal antibody, clone KSR1S392-3A4

Catalog # RAB02809 Size 200 uL

Applications



Flow Cytometry

Flow cytometric analysis of NIH3T3 cells secondary antibody only (blue) or 0.1 ug/mL of isotype control (orange) or of Phospho-KSR1(S392) antibody KSR1S392-3A4 (green).

Specification

Product Description	Rabbit recombinant monoclonal antibody raised against human KSR1.
Antibody Species	Rabbit
Immunogen	A synthetic phospho-peptide corresponding to residues surrounding Ser392 of human phospho KSR1
Reactivity	Human
Form	Liquid
Purification	Protein A+G
Isotype	Rabbit IgG1k
Recommend Usage	Flow Cytometry The optimal working dilution should be determined by the end user.
Storage Buffer	1X PBS, 0.02% Sodium azide, 50% Glycerol, 0.1% BSA

Storage Instruction

Store at -20°C.
Aliquot to avoid repeated freezing and thawing.

Note

This product contains sodium azide: a POISONOUS AND HAZARDOUS SUBSTANCE which should be handled by trained staff only.

Applications

- Flow Cytometry

Flow cytometric analysis of NIH3T3 cells secondary antibody only (blue) or 0.1 ug/mL of isotype control (orange) or of Phospho-KSR1(S392) antibody KSR1S392-3A4 (green).

Gene Info — KSR1

Entrez GeneID[8844](#)**Protein Accession#**[Q8IVT5](#)**Gene Name**

KSR1

Gene Alias

KSR, RSU2

Gene Description

kinase suppressor of ras 1

Omim ID[601132](#)**Gene Ontology**[Hyperlink](#)**Other Designations**

kinase suppressor of ras

Disease

- [Tobacco Use Disorder](#)