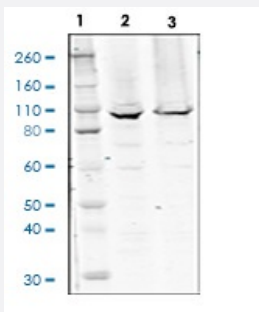


RecomAb™

# RPS6KA5 recombinant monoclonal antibody, clone MSK1T581-A5

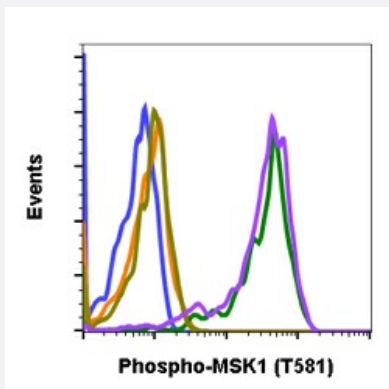
Catalog # RAB02808      Size 200 uL

## Applications



### Western Blot

Western blot analysis of 293T cell extract untreated or treated with UV using 0.1 ug/mL Phospho-MSK1 (Thr581) antibody MSK1T581-A5.



### Flow Cytometry

Peptide blocking flow cytometric analysis of C6 cells secondary antibody only negative control (light blue) or pervanadate-treated and stained using 0.1ug/mL isotype control (orange) or pervanadate-treated and stained using 0.1ug/mL Phospho-MSK1 (Thr581) antibody MSK1T581-A5 (green) or pervanadate and blocked with phospho peptide (gold) or pervanadate and blocked with non-phospho peptide (purple).

## Specification

Product Description	Rabbit recombinant monoclonal antibody raised against human RPS6KA5.
Antibody Species	Rabbit
Immunogen	A synthetic phospho-peptide corresponding to residues surrounding Thr581 of human phospho MSK1
Reactivity	Human
Form	Liquid

Purification	Protein A+G
Isotype	Rabbit IgG1k
Recommend Usage	Flow Cytometry Western Blot The optimal working dilution should be determined by the end user.
Storage Buffer	1X PBS, 0.02% Sodium azide, 50% Glycerol, 0.1% BSA
Storage Instruction	Store at -20°C. Aliquot to avoid repeated freezing and thawing.
Note	This product contains sodium azide: a POISONOUS AND HAZARDOUS SUBSTANCE which should be handled by trained staff only.

## Applications

- Western Blot

Western blot analysis of 293T cell extract untreated or treated with UV using 0.1 ug/mL Phospho-MSK1 (Thr581) antibody MSK1T581-A5.

- Flow Cytometry

Peptide blocking flow cytometric analysis of C6 cells secondary antibody only negative control (light blue) or pervanadate-treated and stained using 0.1ug/mL isotype control (orange) or pervanadate-treated and stained using 0.1ug/mL Phospho-MSK1 (Thr581) antibody MSK1T581-A5 (green) or pervanadate and blocked with phospho peptide (gold) or pervanadate and blocked with non-phospho peptide (purple).

## Gene Info — RPS6KA5

Entrez GeneID	<a href="#">9252</a>
Protein Accession#	<a href="#">O75582</a>
Gene Name	RPS6KA5
Gene Alias	MGC1911, MSK1, MSPK1, RLPK
Gene Description	ribosomal protein S6 kinase, 90kDa, polypeptide 5
Omim ID	<a href="#">603607</a>
Gene Ontology	<a href="#">Hyperlink</a>
Gene Summary	90kDa

**Other Designations**

mitogen- and stress-activated protein kinase 1|ribosomal protein S6 kinase, 90kD, polypeptide 5

**Pathway**

- [Bladder cancer](#)
- [MAPK signaling pathway](#)
- [Neurotrophin signaling pathway](#)

**Disease**

- [Genetic Predisposition to Disease](#)
- [Tobacco Use Disorder](#)
- [Urinary Bladder Neoplasms](#)