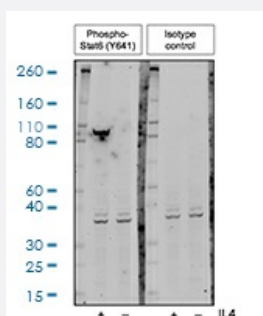


RecomAb™

Isotype control recombinant monoclonal antibody, clone KLH-G9

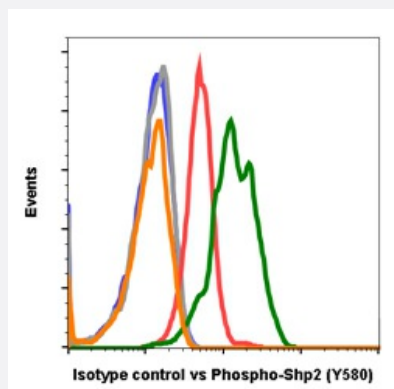
Catalog # RAB02803 Size 200 uL

Applications



Western Blot

Western blot analysis of Daudi cells untreated or treated with 200 ng/mL IL-4 using isotype control antibody KLH-G9 or using Phospho-Stat6 (Y641) antibody Stat6Y641-G12 both tested at 0.01 ug/mL.



Flow Cytometry

Flow cytometric analysis of NIH3T3 cells secondary antibody only (blue) or treated with imatinib (grey) or with pervanadate (orange) using isotype control antibody KLH-G9 compared to imatinib (red) or pervanadate (green) using Phospho-Shp2 (Y580) antibody Shp2Y580-4A2 both tested at 0.1 ug/mL.

Specification

Product Description	Rabbit recombinant monoclonal antibody raised against human Isotype control.
Antibody Species	Rabbit
Immunogen	Keyhole limpet hemocyanin carrier protein.
Form	Liquid
Purification	Protein A+G

Isotype	Rabbit IgG1k
Recommend Usage	ELISA Flow Cytometry Western Blot The optimal working dilution should be determined by the end user.
Storage Buffer	1X PBS, 0.02% Sodium azide, 50% Glycerol, 0.1% BSA
Storage Instruction	Store at -20°C. Aliquot to avoid repeated freezing and thawing.
Note	This product contains sodium azide: a POISONOUS AND HAZARDOUS SUBSTANCE which should be handled by trained staff only.

Applications

- Western Blot

Western blot analysis of Daudi cells untreated or treated with 200 ng/mL IL-4 using isotype control antibody KLH-G9 or using Phospho-Stat6 (Y641) antibody Stat6Y641-G12 both tested at 0.01 ug/mL.

- Enzyme-linked Immunoabsorbent Assay

- Flow Cytometry

Flow cytometric analysis of NIH3T3 cells secondary antibody only (blue) or treated with imatinib (grey) or with pervanadate (orange) using isotype control antibody KLH-G9 compared to imatinib (red) or pervanadate (green) using Phospho-Shp2 (Y580) antibody Shp2Y580-4A2 both tested at 0.1 ug/mL.