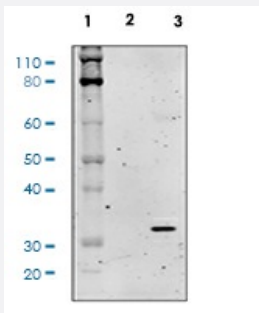


RecomAb™

RPS6 recombinant monoclonal antibody, clone S6S235S236-R3A2

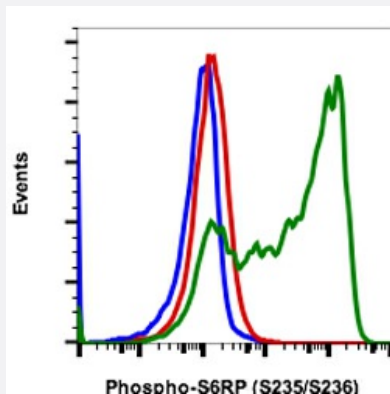
Catalog # RAB02785 Size 200 uL

Applications



Western Blot

Western blot analysis of NIH3T3 cell extract untreated or treated with 20% FBS using Phospho-S6 ribosomal protein (Ser235/Ser236) antibody S6S235S236-R3A2.



Flow Cytometry

Flow cytometric analysis of U937 cells secondary antibody only negative control (blue) or treated with U0126 plus SB20350 (red) or treated with TPA plus calyculin A (green) using Phospho-S6 ribosomal protein (Ser235/Ser236) antibody S6S235S236-R3A2.

Specification

Product Description	Rabbit recombinant monoclonal antibody raised against human RPS6.
Antibody Species	Rabbit
Immunogen	A synthetic phospho-peptide corresponding to residues surrounding Ser235/236 of human phospho S6 Ribosomal Protein
Reactivity	Human

Form	Liquid
Purification	Protein A+G
Isotype	Rabbit IgG1k
Recommend Usage	Flow Cytometry Western Blot The optimal working dilution should be determined by the end user.
Storage Buffer	1X PBS, 0.02% Sodium azide, 50% Glycerol, 0.1% BSA
Storage Instruction	Store at -20°C. Aliquot to avoid repeated freezing and thawing.
Note	This product contains sodium azide: a POISONOUS AND HAZARDOUS SUBSTANCE which should be handled by trained staff only.

Applications

- Western Blot

Western blot analysis of NIH3T3 cell extract untreated or treated with 20% FBS using Phospho-S6 ribosomal protein (Ser235/Ser236) antibody S6S235S236-R3A2.

- Flow Cytometry

Flow cytometric analysis of U937 cells secondary antibody only negative control (blue) or treated with U0126 plus SB20350 (red) or treated with TPA plus calyculin A (green) using Phospho-S6 ribosomal protein (Ser235/Ser236) antibody S6S235S236-R3A2.

Gene Info — RPS6

Entrez GeneID	6194
Protein Accession#	P62753
Gene Name	RPS6
Gene Alias	-
Gene Description	ribosomal protein S6
Omim ID	180460
Gene Ontology	Hyperlink

Gene Summary

Ribosomes, the organelles that catalyze protein synthesis, consist of a small 40S subunit and a large 60S subunit. Together these subunits are composed of 4 RNA species and approximately 80 structurally distinct proteins. This gene encodes a cytoplasmic ribosomal protein that is a component of the 40S subunit. The protein belongs to the S6E family of ribosomal proteins. It is the major substrate of protein kinases in the ribosome, with subsets of five C-terminal serine residues phosphorylated by different protein kinases. Phosphorylation is induced by a wide range of stimuli, including growth factors, tumor-promoting agents, and mitogens. Dephosphorylation occurs at growth arrest. The protein may contribute to the control of cell growth and proliferation through the selective translation of particular classes of mRNA. As is typical for genes encoding ribosomal proteins, there are multiple processed pseudogenes of this gene dispersed through the genome. [provided by RefSeq]

Other Designations

40S ribosomal protein S6|OTTHUMP00000021120|phosphoprotein NP33

Pathway

- [Insulin signaling pathway](#)
- [mTOR signaling pathway](#)
- [Ribosome](#)