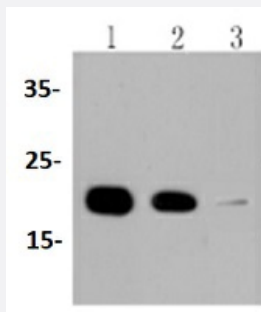


RecomAb™

PPIB recombinant monoclonal antibody

Catalog # RAB02772 Size 100 uL

Applications



Western Blot (Cell lysate)

Western blot analysis of Lane1:Hela whole cell lysate Lane2:HepG2 whole cell lysate Lane3:NIH/3T3 whole cell lysate with PPIB recombinant monoclonal antibody (Cat # RAB02772) at 1:1000 dilution.

Specification

Product Description	Rabbit recombinant monoclonal antibody raised against PPIB.
Antibody Species	Rabbit
Immunogen	Original antibody is raised against recombinant PPIB.
Theoretical MW (kDa)	18
Reactivity	Human, Mouse, Rat
Specificity	This antibody detects endogenous levels of Cyclophilin B and does not cross-react with related proteins.
Form	Liquid
Purification	Protein A purification
Isotype	IgG
Recommend Usage	Western Blot (1:1000-1:5000) The optimal working dilution should be determined by the end user.

Storage Buffer	In PBS, pH7.2 (50% glycerol and 0.02% sodium azide)
Storage Instruction	Store at 4°C short term. Aliquot and store at -20°C long term. Avoid freeze-thaw cycles.
Note	This product contains sodium azide: a POISONOUS AND HAZARDOUS SUBSTANCE which should be handled by trained staff only.

Applications

- Western Blot (Cell lysate)

Western blot analysis of Lane1:Hela whole cell lysate Lane2:HepG2 whole cell lysate Lane3:NIH/3T3 whole cell lysate with PPIB recombinant monoclonal antibody (Cat # RAB02772) at 1:1000 dilution.

Gene Info — PPIB

Entrez GeneID	5479
Protein Accession#	P23284
Gene Name	PPIB
Gene Alias	CYP-S1, CYPB, MGC14109, MGC2224, SCYLP
Gene Description	peptidylprolyl isomerase B (cyclophilin B)
Omim ID	123841
Gene Ontology	Hyperlink
Gene Summary	The protein encoded by this gene is a cyclosporine-binding protein and is mainly located within the endoplasmic reticulum. It is associated with the secretory pathway and released in biological fluids. This protein can bind to cells derived from T- and B-lymphocytes, and may regulate cyclosporine A-mediated immunosuppression. [provided by RefSeq]
Other Designations	PPlase S-cyclophilin cyclophilin B cyclophilin-like protein peptidyl-prolyl cis-trans isomerase B peptidylprolyl isomerase B rotamase

Disease

- [Disease Progression](#)
- [Disease Susceptibility](#)

- [HIV Infections](#)