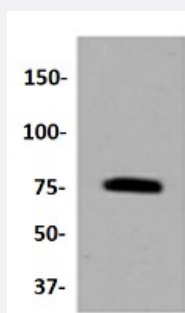


RecomAb™

PRKCB recombinant monoclonal antibody

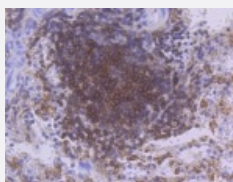
Catalog # RAB02763 Size 100 uL

Applications



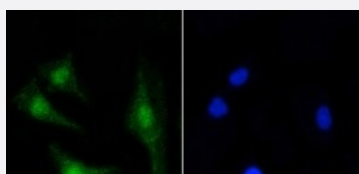
Western Blot (Cell lysate)

Western blot analysis of Lane1:Raji whole cell lysate with PRKCB recombinant monoclonal antibody (Cat # RAB02763) at 1:1000 dilution.



Immunohistochemistry (Formalin/PFA-fixed paraffin-embedded sections)

Immunohistochemical analysis of paraffin-embedded human spleen tissue using PRKCB recombinant monoclonal antibody (Cat # RAB02763). Counter stained with hematoxylin.



Immunocytochemistry

Immunocytochemical staining of SH-SY-5Y cells using PRKCB recombinant monoclonal antibody (Cat # RAB02763)(green). The nuclear counter stain is DAPI (blue). Cells were fixed in paraformaldehyde, permeabilised with 0.25% Triton *100/PBS.

Specification

Product Description

Rabbit recombinant monoclonal antibody raised against PRKCB.

Antibody Species	Rabbit
Immunogen	Original antibody is raised against recombinant PRKCB.
Theoretical MW (kDa)	82
Reactivity	Human, Mouse, Rat
Specificity	This antibody detects endogenous levels of PKC beta and does not cross-react with related proteins .
Form	Liquid
Purification	Protein A purification
Isotype	IgG
Recommend Usage	Flow Cytometry (1:50-1:100) Immunocytochemistry (1:50-1:200) Immunofluorescence (1:50-1:200) Immunohistochemistry (1:50-1:200) Western Blot (1:1000-1:2000) The optimal working dilution should be determined by the end user.
Storage Buffer	In PBS, pH7.2 (50% glycerol and 0.02% sodium azide)
Storage Instruction	Store at 4°C short term. Aliquot and store at -20°C long term. Avoid freeze-thaw cycles.
Note	This product contains sodium azide: a POISONOUS AND HAZARDOUS SUBSTANCE which should be handled by trained staff only.

Applications

- Western Blot (Cell lysate)

Western blot analysis of Lane1:Raji whole cell lysate with PRKCB recombinant monoclonal antibody (Cat # RAB02763) at 1:1000 dilution.

- Immunohistochemistry (Formalin/PFA-fixed paraffin-embedded sections)

Immunohistochemical analysis of paraffin-embedded human spleen tissue using PRKCB recombinant monoclonal antibody (Cat # RAB02763). Counter stained with hematoxylin.

- Immunocytochemistry

Immunocytochemical staining of SH-SY-5Y cells using PRKCB recombinant monoclonal antibody (Cat # RAB02763)(green). The nuclear counter stain is DAPI (blue). Cells were fixed in paraformaldehyde, permeabilised with 0.25% Triton *100/PBS.

- Immunofluorescence
- Flow Cytometry

Gene Info — PRKCB

Entrez GeneID [5579](#)

Protein Accession# [P05771](#)

Gene Name PRKCB

Gene Alias MGC41878, PKC-beta, PKCB, PRKCB1, PRKCB2

Gene Description protein kinase C, beta

Omim ID [176970](#)

Gene Ontology [Hyperlink](#)

Gene Summary

Protein kinase C (PKC) is a family of serine- and threonine-specific protein kinases that can be activated by calcium and second messenger diacylglycerol. PKC family members phosphorylate a wide variety of protein targets and are known to be involved in diverse cellular signaling pathways. PKC family members also serve as major receptors for phorbol esters, a class of tumor promoters. Each member of the PKC family has a specific expression profile and is believed to play a distinct role in cells. The protein encoded by this gene is one of the PKC family members. This protein kinase has been reported to be involved in many different cellular functions, such as B cell activation, apoptosis induction, endothelial cell proliferation, and intestinal sugar absorption. Studies in mice also suggest that this kinase may also regulate neuronal functions and correlate fear-induced conflict behavior after stress. Alternatively spliced transcript variants encoding distinct isoforms have been reported. [provided by RefSeq]

Other Designations protein kinase C, beta 1 polypeptide

Pathway

- [B cell receptor signaling pathway](#)
- [Calcium signaling pathway](#)
- [Chemokine signaling pathway](#)
- [ErbB signaling pathway](#)
- [Fc epsilon RI signaling pathway](#)

- [Fc gamma R-mediated phagocytosis](#)
- [Focal adhesion](#)
- [Gap junction](#)
- [Glioma](#)
- [GnRH signaling pathway](#)
- [Leukocyte transendothelial migration](#)
- [Long-term depression](#)
- [Long-term potentiation](#)
- [MAPK signaling pathway](#)
- [Melanogenesis](#)
- [Natural killer cell mediated cytotoxicity](#)
- [Non-small cell lung cancer](#)
- [Pathways in cancer](#)
- [Phosphatidylinositol signaling system](#)
- [Tight junction](#)
- [Vascular smooth muscle contraction](#)
- [VEGF signaling pathway](#)
- [Vibrio cholerae infection](#)
- [Wnt signaling pathway](#)

Disease

- [Albuminuria](#)
- [Autistic Disorder](#)
- [Cardiovascular Diseases](#)
- [Diabetes Mellitus](#)
- [Diabetic Angiopathies](#)

- [Diabetic Nephropathies](#)
- [Diabetic Retinopathy](#)
- [Disease Progression](#)
- [Edema](#)
- [Epilepsies](#)
- [Genetic Predisposition to Disease](#)
- [Kidney Failure](#)
- [Liver Cirrhosis](#)
- [Proteinuria](#)
- [Syndrome](#)
- [Tobacco Use Disorder](#)