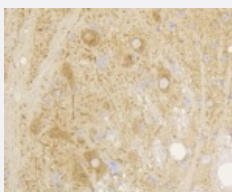


RecomAb™

GRM5 recombinant monoclonal antibody

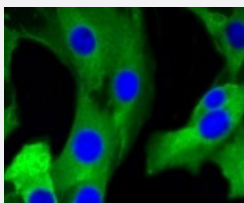
Catalog # RAB02757 Size 100 uL

Applications



Immunohistochemistry (Formalin/PFA-fixed paraffin-embedded sections)

Immunohistochemical analysis of paraffin-embedded mouse brain tissue using GRM5 recombinant monoclonal antibody (Cat # RAB02757). Counter stained with hematoxylin.



Immunocytochemistry

Immunocytochemical staining of SHG-44 cells cells using GRM5 recombinant monoclonal antibody (Cat # RAB02757)(green). The nuclear counter stain is DAPI (blue). Cells were fixed in paraformaldehyde, permeabilised with 0.25% Triton *100/PBS.

Specification

Product Description	Rabbit recombinant monoclonal antibody raised against GRM5.
Antibody Species	Rabbit
Immunogen	Original antibody is raised against recombinant GRM5.
Theoretical MW (kDa)	132
Reactivity	Human, Mouse, Rat
Specificity	This antibody detects endogenous levels of mGluR-5 and does not cross-react with related proteins.

Form	Liquid
Purification	Protein A purification
Isotype	IgG
Recommend Usage	Flow Cytometry (1:50-1:100) Immunocytochemistry (1:50-1:200) Immunofluorescence (1:50-1:200) Immunohistochemistry (1:200-1:500) Western Blot (1:1000-1:2000) The optimal working dilution should be determined by the end user.
Storage Buffer	In PBS, pH7.2 (50% glycerol and 0.02% sodium azide)
Storage Instruction	Store at 4°C short term. Aliquot and store at -20°C long term. Avoid freeze-thaw cycles.
Note	This product contains sodium azide: a POISONOUS AND HAZARDOUS SUBSTANCE which should be handled by trained staff only.

Applications

- Western Blot
- Immunohistochemistry (Formalin/PFA-fixed paraffin-embedded sections)
Immunohistochemical analysis of paraffin-embedded mouse brain tissue using GRM5 recombinant monoclonal antibody (Cat # RAB02757). Counter stained with hematoxylin.
- Immunocytochemistry
Immunocytochemical staining of SHG-44 cells using GRM5 recombinant monoclonal antibody (Cat # RAB02757)(green). The nuclear counter stain is DAPI (blue). Cells were fixed in paraformaldehyde, permeabilised with 0.25% Triton *100/PBS.
- Immunofluorescence
- Flow Cytometry

Gene Info — GRM5

Entrez GeneID	2915
Protein Accession#	P41594

Gene Name	GRM5
Gene Alias	GPRC1E, MGLUR5, mGlu5
Gene Description	glutamate receptor, metabotropic 5
Omim ID	604102
Gene Ontology	Hyperlink
Gene Summary	L-glutamate is the major excitatory neurotransmitter in the central nervous system and activates both ionotropic and metabotropic glutamate receptors. Glutamatergic neurotransmission is involved in most aspects of normal brain function and can be perturbed in many neuropathologic conditions. The metabotropic glutamate receptors are a family of G protein-coupled receptors, that have been divided into 3 groups on the basis of sequence homology, putative signal transduction mechanisms, and pharmacologic properties. Group I includes GRM1 and GRM5 and these receptors have been shown to activate phospholipase C. Group II includes GRM2 and GRM3 while Group III includes GRM4, GRM6, GRM7 and GRM8. Group II and III receptors are linked to the inhibition of the cyclic AMP cascade but differ in their agonist selectivities. Multiple transcript variants encoding different isoforms have been found for this gene. [provided by RefSeq]
Other Designations	-

Pathway

- [Calcium signaling pathway](#)
- [Gap junction](#)
- [Long-term depression](#)
- [Long-term potentiation](#)
- [Neuroactive ligand-receptor interaction](#)

Disease

- [Alcoholism](#)
- [Anorexia Nervosa](#)
- [Bulimia](#)
- [Cardiovascular Diseases](#)
- [Cognition](#)

- [Diabetes Mellitus](#)
- [Edema](#)
- [Genetic Predisposition to Disease](#)
- [Mental Disorders](#)
- [Schizophrenia](#)
- [Schizophrenic Psychology](#)
- [Tobacco Use Disorder](#)
- [Weight Gain](#)