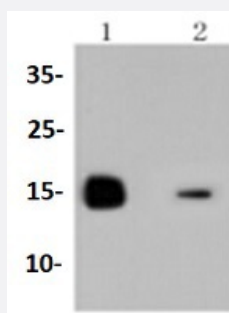


RecomAb™

# LYZ recombinant monoclonal antibody

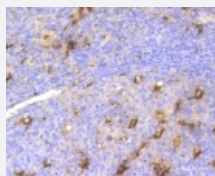
Catalog # RAB02756      Size 100 uL

## Applications



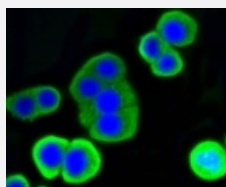
### Western Blot

Western blot analysis of Lane1:The kidney tissue lysate of Mouse Lane2:HL-60 whole cell lysate with LYZ recombinant monoclonal antibody (Cat # RAB02756) at 1:1000 dilution.



### Immunohistochemistry (Formalin/PFA-fixed paraffin-embedded sections)

Immunohistochemical analysis of paraffin-embedded human tonsil tissue using LYZ recombinant monoclonal antibody (Cat # RAB02756). Counter stained with hematoxylin.



### Immunocytochemistry

Immunocytochemical staining of CRC cells using LYZ recombinant monoclonal antibody (Cat # RAB02756)(green). The nuclear counter stain is DAPI (blue). Cells were fixed in paraformaldehyde, permeabilised with 0.25% Triton \*100/PBS.

## Specification

### Product Description

Rabbit recombinant monoclonal antibody raised against LYZ.

Antibody Species	Rabbit
Immunogen	Original antibody is raised against recombinant LYZ.
Theoretical MW (kDa)	17
Reactivity	Human, Mouse
Specificity	This antibody detects endogenous levels of LYZ and does not cross-react with related proteins.
Form	Liquid
Purification	Protein A purification
Isotype	IgG
Recommend Usage	Immunocytochemistry (1:50-1:200) Immunofluorescence (1:50-1:200) Immunohistochemistry (1:200-1:500) Western Blot (1:1000-1:2000) The optimal working dilution should be determined by the end user.
Storage Buffer	In PBS, pH7.2 (50% glycerol and 0.02% sodium azide)
Storage Instruction	Store at 4°C short term. Aliquot and store at -20°C long term. Avoid freeze-thaw cycles.
Note	This product contains sodium azide: a POISONOUS AND HAZARDOUS SUBSTANCE which should be handled by trained staff only.

## Applications

- Western Blot

Western blot analysis of Lane1:The kidney tissue lysate of Mouse Lane2:HL-60 whole cell lysate with LYZ recombinant monoclonal antibody (Cat # RAB02756) at 1:1000 dilution.

- Immunohistochemistry (Formalin/PFA-fixed paraffin-embedded sections)

Immunohistochemical analysis of paraffin-embedded human tonsil tissue using LYZ recombinant monoclonal antibody (Cat # RAB02756). Counter stained with hematoxylin.

- Immunocytochemistry

Immunocytochemical staining of CRC cells using LYZ recombinant monoclonal antibody (Cat # RAB02756)(green). The nuclear counter stain is DAPI (blue). Cells were fixed in paraformaldehyde, permeabilised with 0.25% Triton \*100/PBS.

- Immunofluorescence

## Gene Info — LYZ

**Entrez GeneID** [4069](#)**Protein Accession#** [P61626](#)**Gene Name** LYZ**Gene Alias** LZM**Gene Description** lysozyme (renal amyloidosis)**Omim ID** [105200](#) [153450](#)**Gene Ontology** [Hyperlink](#)

**Gene Summary** This gene encodes human lysozyme, whose natural substrate is the bacterial cell wall peptidoglycan (cleaving the beta[1-4]glycosidic linkages between N-acetylmuramic acid and N-acetylglucosamine). Lysozyme is one of the anti-microbial agents found in human milk, and is also present in spleen, lung, kidney, white blood cells, plasma, saliva, and tears. Missense mutations in LYZ have been identified in heritable renal amyloidosis. [provided by RefSeq]

**Other Designations** 1,4-beta-N-acetylmuramidase C|lysozyme|lysozyme C

## Disease

- [Chorioamnionitis](#)
- [Fetal Membranes](#)
- [Genetic Predisposition to Disease](#)
- [Obstetric Labor](#)
- [Pre-Eclampsia](#)
- [Premature Birth](#)