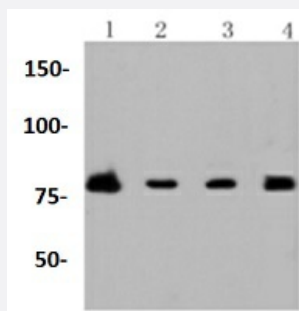


RecomAb™

PIK3R2 recombinant monoclonal antibody

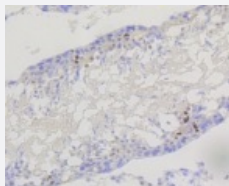
Catalog # RAB02754 Size 100 uL

Applications



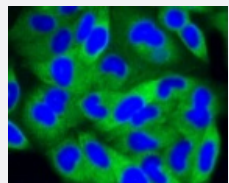
Western Blot (Cell lysate)

Western blot analysis of Lane1:Raji whole cell lysate Lane2:HeLa whole cell lysate Lane3:MCF7 whole cell lysate Lane4:U937 whole cell lysate with PIK3R2 recombinant monoclonal antibody (Cat # RAB02754) at 1:1000 dilution.



Immunohistochemistry (Formalin/PFA-fixed paraffin-embedded sections)

Immunohistochemical analysis of paraffin-embedded rat testis tissue using PIK3R2 recombinant monoclonal antibody (Cat # RAB02754). Counter stained with hematoxylin.



Immunocytochemistry

Immunocytochemical staining of HeLa cells using PIK3R2 recombinant monoclonal antibody (Cat # RAB02754)(green). The nuclear counter stain is DAPI (blue). Cells were fixed in paraformaldehyde, permeabilised with 0.25% Triton *100/PBS.

Specification

Product Description

Rabbit recombinant monoclonal antibody raised against PIK3R2.

Antibody Species	Rabbit
Immunogen	Original antibody is raised against recombinant PIK3R2.
Theoretical MW (kDa)	85
Reactivity	Human, Rat
Specificity	This antibody detects endogenous levels of PI3K p85beta and does not cross-react with related proteins.
Form	Liquid
Purification	Protein A purification
Isotype	IgG
Recommend Usage	Flow Cytometry (1:50-1:100) Immunocytochemistry (1:50-1:200) Immunofluorescence (1:50-1:200) Immunohistochemistry (1:50-1:200) Western Blot (1:1000-1:2000) The optimal working dilution should be determined by the end user.
Storage Buffer	In PBS, pH7.2 (50% glycerol and 0.02% sodium azide)
Storage Instruction	Store at 4°C short term. Aliquot and store at -20°C long term. Avoid freeze-thaw cycles.
Note	This product contains sodium azide: a POISONOUS AND HAZARDOUS SUBSTANCE which should be handled by trained staff only.

Applications

- Western Blot (Cell lysate)

Western blot analysis of Lane1:Raji whole cell lysate Lane2:Hela whole cell lysate Lane3:MCF7 whole cell lysate Lane4:U937 whole cell lysate with PIK3R2 recombinant monoclonal antibody (Cat # RAB02754) at 1:1000 dilution.

- Immunohistochemistry (Formalin/PFA-fixed paraffin-embedded sections)

Immunohistochemical analysis of paraffin-embedded rat testis tissue using PIK3R2 recombinant monoclonal antibody (Cat # RAB02754). Counter stained with hematoxylin.

- Immunocytochemistry

Immunocytochemical staining of HeLa cells using PIK3R2 recombinant monoclonal antibody (Cat # RAB02754)(green). The nuclear counter stain is DAPI (blue). Cells were fixed in paraformaldehyde, permeabilised with 0.25% Triton *100/PBS.

- Immunofluorescence
- Flow Cytometry

Gene Info — PIK3R2

Entrez GeneID	5296
Protein Accession#	O00459
Gene Name	PIK3R2
Gene Alias	P85B, p85, p85-BETA
Gene Description	phosphoinositide-3-kinase, regulatory subunit 2 (beta)
Omim ID	603157
Gene Ontology	Hyperlink
Gene Summary	O
Other Designations	phosphatidylinositol 3-kinase, regulatory subunit, polypeptide 2 (p85 beta) phosphoinositide-3-kinase, regulatory subunit 2 (p85 beta) phosphoinositide-3-kinase, regulatory subunit, polypeptide 2 (p85 beta)

Pathway

- [Acute myeloid leukemia](#)
- [Apoptosis](#)
- [B cell receptor signaling pathway](#)
- [Chemokine signaling pathway](#)
- [Chronic myeloid leukemia](#)
- [Colorectal cancer](#)
- [Endometrial cancer](#)
- [ErbB signaling pathway](#)
- [Fc epsilon RI signaling pathway](#)

- [Fc gamma R-mediated phagocytosis](#)
- [Focal adhesion](#)
- [Glioma](#)
- [Insulin signaling pathway](#)
- [Jak-STAT signaling pathway](#)
- [Leukocyte transendothelial migration](#)
- [Melanoma](#)
- [mTOR signaling pathway](#)
- [Natural killer cell mediated cytotoxicity](#)
- [Neurotrophin signaling pathway](#)
- [Non-small cell lung cancer](#)
- [Pancreatic cancer](#)
- [Pathways in cancer](#)
- [Phosphatidylinositol signaling system](#)
- [Prostate cancer](#)
- [Regulation of actin cytoskeleton](#)
- [Renal cell carcinoma](#)
- [Small cell lung cancer](#)
- [T cell receptor signaling pathway](#)
- [Toll-like receptor signaling pathway](#)
- [Type II diabetes mellitus](#)
- [VEGF signaling pathway](#)