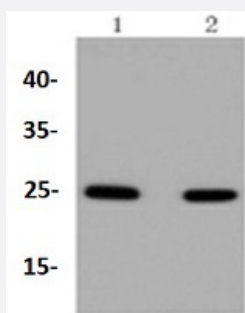


RecomAb™

RAB5A recombinant monoclonal antibody

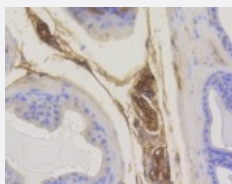
Catalog # RAB02752 Size 100 uL

Applications



Western Blot (Cell lysate)

Western blot analysis of Lane1:Hela whole cell lysate Lane2:MCF7 whole cell lysate with RAB5A recombinant monoclonal antibody (Cat # RAB02752) at 1:1000 dilution.



Immunohistochemistry (Formalin/PFA-fixed paraffin-embedded sections)

Immunohistochemical analysis of paraffin-embedded mouse prostate tissue using RAB5A recombinant monoclonal antibody (Cat # RAB02752). Counter stained with hematoxylin.

Specification

Product Description	Rabbit recombinant monoclonal antibody raised against RAB5A.
Antibody Species	Rabbit
Immunogen	Original antibody is raised against recombinant RAB5A.
Theoretical MW (kDa)	24
Reactivity	Human, Mouse, Rat
Specificity	This antibody detects endogenous levels of RAB5A and does not cross-react with related proteins.

Form	Liquid
Purification	Protein A purification
Isotype	IgG
Recommend Usage	Immunohistochemistry (1:50-1:200) Western Blot (1:1000) The optimal working dilution should be determined by the end user.
Storage Buffer	In PBS, pH7.2 (50% glycerol and 0.02% sodium azide)
Storage Instruction	Store at 4°C short term. Aliquot and store at -20°C long term. Avoid freeze-thaw cycles.
Note	This product contains sodium azide: a POISONOUS AND HAZARDOUS SUBSTANCE which should be handled by trained staff only.

Applications

- Western Blot (Cell lysate)

Western blot analysis of Lane1:Hela whole cell lysate Lane2:MCF7 whole cell lysate with RAB5A recombinant monoclonal antibody (Cat # RAB02752) at 1:1000 dilution.

- Immunohistochemistry (Formalin/PFA-fixed paraffin-embedded sections)

Immunohistochemical analysis of paraffin-embedded mouse prostate tissue using RAB5A recombinant monoclonal antibody (Cat # RAB02752). Counter stained with hematoxylin.

Gene Info — RAB5A

Entrez GeneID	5868
Protein Accession#	P20339
Gene Name	RAB5A
Gene Alias	RAB5
Gene Description	RAB5A, member RAS oncogene family
Omim ID	179512
Gene Ontology	Hyperlink
Gene Summary	O

Other Designations

RAS-associated protein RAB5A

Pathway

- [Amyotrophic lateral sclerosis \(ALS\)](#)
- [Endocytosis](#)

Disease

- [Cardiovascular Diseases](#)
- [Diabetes Mellitus](#)
- [Edema](#)