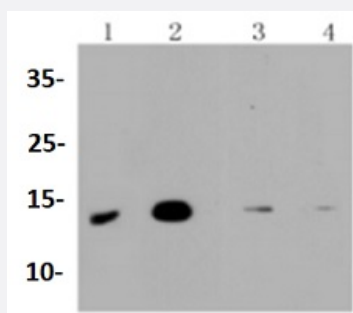


RecomAb™

MAP1LC3A recombinant monoclonal antibody

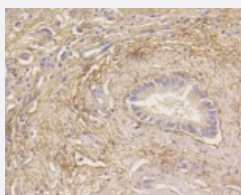
Catalog # RAB02751 Size 100 uL

Applications



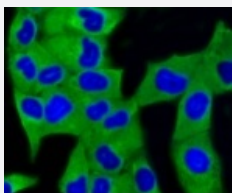
Western Blot

Western blot analysis of Lane1:SHG-44 whole cell lysate Lane2:The brain tissue lysate of Mouse Lane3:The liver tissue lysate of Mouse Lane4:The skeletal muscle lysate of Mouse with MAP1LC3A recombinant monoclonal antibody (Cat # RAB02751) at 1:1000 dilution.



Immunohistochemistry (Formalin/PFA-fixed paraffin-embedded sections)

Immunohistochemical analysis of paraffin-embedded human liver tissue using MAP1LC3A recombinant monoclonal antibody (Cat # RAB02751). Counter stained with hematoxylin.



Immunocytochemistry

Immunocytochemical staining of HeLa cells using MAP1LC3A recombinant monoclonal antibody (Cat # RAB02751)(green). The nuclear counter stain is DAPI (blue). Cells were fixed in paraformaldehyde, permeabilised with 0.25% Triton *100/PBS.

Specification

Product Description

Rabbit recombinant monoclonal antibody raised against MAP1LC3A.

Antibody Species	Rabbit
Immunogen	Original antibody is raised against recombinant MAP1LC3A.
Theoretical MW (kDa)	14
Reactivity	Human, Mouse, Rat
Specificity	This antibody detects endogenous levels of MAP1LC3A and does not cross-react with related proteins.
Form	Liquid
Purification	Protein A purification
Isotype	IgG
Recommend Usage	Flow Cytometry (1:50-1:100) Immunocytochemistry (1:50-1:200) Immunofluorescence (1:50-1:200) Immunohistochemistry (1:50-1:200) Western Blot (1:1000-1:2000) The optimal working dilution should be determined by the end user.
Storage Buffer	In PBS, pH7.2 (50% glycerol and 0.02% sodium azide)
Storage Instruction	Store at 4°C short term. Aliquot and store at -20°C long term. Avoid freeze-thaw cycles.
Note	This product contains sodium azide: a POISONOUS AND HAZARDOUS SUBSTANCE which should be handled by trained staff only.

Applications

- Western Blot

Western blot analysis of Lane1:SHG-44 whole cell lysate Lane2:The brain tissue lysate of Mouse Lane3:The liver tissue lysate of Mouse Lane4:The skeletal muscle lysate of Mouse with MAP1LC3A recombinant monoclonal antibody (Cat # RAB02751) at 1:1000 dilution.

- Immunohistochemistry (Formalin/PFA-fixed paraffin-embedded sections)

Immunohistochemical analysis of paraffin-embedded human liver tissue using MAP1LC3A recombinant monoclonal antibody (Cat # RAB02751). Counter stained with hematoxylin.

- Immunocytochemistry

Immunocytochemical staining of HeLa cells using MAP1LC3A recombinant monoclonal antibody (Cat # RAB02751)(green). The nuclear counter stain is DAPI (blue). Cells were fixed in paraformaldehyde, permeabilised with 0.25% Triton *100/PBS.

- Immunofluorescence

- Flow Cytometry

Gene Info — MAP1LC3A

Entrez GeneID [84557](#)

Protein Accession# [Q9H492](#)

Gene Name MAP1LC3A

Gene Alias LC3, LC3A, MAP1ALC3, MAP1BLC3

Gene Description microtubule-associated protein 1 light chain 3 alpha

Omim ID [601242](#)

Gene Ontology [Hyperlink](#)

Gene Summary MAP1A and MAP1B are microtubule-associated proteins which mediate the physical interactions between microtubules and components of the cytoskeleton. MAP1A and MAP1B each consist of a heavy chain subunit and multiple light chain subunits. The protein encoded by this gene is one of the light chain subunits and can associate with either MAP1A or MAP1B. Two transcript variants encoding different isoforms have been found for this gene. [provided by RefSeq]

Other Designations MAP1 light chain 3-like protein 1|MAP1A/1B light chain 3 A|MAP1A/MAP1B LC3 A|OTTHUMP0000030696|OTTHUMP00000030697|OTTHUMP00000030698|microtubule-associated proteins 1A/1B light chain 3