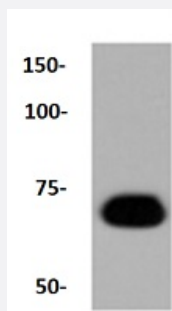


RecomAb™

CALD1 recombinant monoclonal antibody

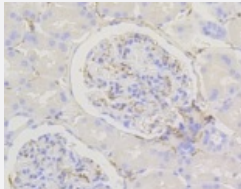
Catalog # RAB02744 Size 100 uL

Applications



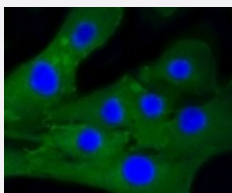
Western Blot (Cell lysate)

Western blot analysis of Lane1:NIH/3T3 whole cell lysate with CALD1 recombinant monoclonal antibody (Cat # RAB02744) at 1:1000 dilution.



Immunohistochemistry (Formalin/PFA-fixed paraffin-embedded sections)

Immunohistochemical analysis of paraffin-embedded human kidney tissue using CALD1 recombinant monoclonal antibody (Cat # RAB02744).Counter stained with hematoxylin.



Immunocytochemistry

Immunocytochemical staining of C2C12 cells using CALD1 recombinant monoclonal antibody (Cat # RAB02744)(green). The nuclear counter stain is DAPI (blue). Cells were fixed in paraformaldehyde, permeabilised with 0.25% Triton *100/PBS.

Specification

Product Description

Rabbit recombinant monoclonal antibody raised against CALD1.

Antibody Species	Rabbit
Immunogen	Original antibody is raised against recombinant CALD1.
Theoretical MW (kDa)	70-80, 120-150
Reactivity	Human, Mouse, Rat
Specificity	This antibody detects endogenous levels of Caldesmon and does not cross-react with related proteins.
Form	Liquid
Purification	Protein A purification
Isotype	IgG
Recommend Usage	Flow Cytometry (1:50-1:100) Immunocytochemistry (1:50-1:200) Immunofluorescence (1:50-1:200) Immunohistochemistry (1:50-1:200) Western Blot (1:1000-1:2000) The optimal working dilution should be determined by the end user.
Storage Buffer	In PBS, pH7.2 (50% glycerol and 0.02% sodium azide)
Storage Instruction	Store at 4°C short term. Aliquot and store at -20°C long term. Avoid freeze-thaw cycles.
Note	This product contains sodium azide: a POISONOUS AND HAZARDOUS SUBSTANCE which should be handled by trained staff only.

Applications

- Western Blot (Cell lysate)

Western blot analysis of Lane1:NIH/3T3 whole cell lysate with CALD1 recombinant monoclonal antibody (Cat # RAB02744) at 1:1000 dilution.

- Immunohistochemistry (Formalin/PFA-fixed paraffin-embedded sections)

Immunohistochemical analysis of paraffin-embedded human kidney tissue using CALD1 recombinant monoclonal antibody (Cat # RAB02744).Counter stained with hematoxylin.

- Immunocytochemistry

Immunocytochemical staining of C2C12 cells using CALD1 recombinant monoclonal antibody (Cat # RAB02744)(green). The nuclear counter stain is DAPI (blue). Cells were fixed in paraformaldehyde, permeabilised with 0.25% Triton *100/PBS.

- Immunofluorescence
- Flow Cytometry

Gene Info — CALD1

Entrez GeneID [800](#)

Protein Accession# [Q05682](#)

Gene Name CALD1

Gene Alias CDM, H-CAD, L-CAD, MGC21352, NAG22

Gene Description caldesmon 1

Omim ID [114213](#)

Gene Ontology [Hyperlink](#)

Gene Summary This gene encodes a calmodulin- and actin-binding protein that plays an essential role in the regulation of smooth muscle and nonmuscle contraction. The conserved domain of this protein possesses the binding activities to Ca(2+)-calmodulin, actin, tropomyosin, myosin, and phospholipids. This protein is a potent inhibitor of the actin-tropomyosin activated myosin MgATPase, and serves as a mediating factor for Ca(2+)-dependent inhibition of smooth muscle contraction. Alternative splicing of this gene results in multiple transcript variants encoding distinct isoforms. [provided by RefSeq]

Other Designations -

Pathway

- [Vascular smooth muscle contraction](#)

Disease

- [Diabetes Mellitus](#)
- [Diabetic Nephropathies](#)
- [Genetic Predisposition to Disease](#)

- [Tobacco Use Disorder](#)