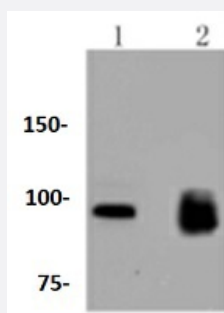


RecomAb™

KIF23 recombinant monoclonal antibody

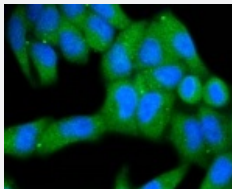
Catalog # RAB02740 Size 100 uL

Applications



Western Blot (Cell lysate)

Western blot analysis of Lane1:A549 whole cell lysate Lane2:Hela whole cell lysate with KIF23 recombinant monoclonal antibody (Cat # RAB02740) at 1:1000 dilution.



Immunocytochemistry

Immunocytochemical staining of HeLa cells using KIF23 recombinant monoclonal antibody (Cat # RAB02740)(green). The nuclear counter stain is DAPI (blue). Cells were fixed in paraformaldehyde, permeabilised with 0.25% Triton *100/PBS.

Specification

Product Description	Rabbit recombinant monoclonal antibody raised against KIF23.
Antibody Species	Rabbit
Immunogen	Original antibody is raised against recombinant KIF23.
Reactivity	Human, Mouse, Rat
Specificity	This antibody detects endogenous levels of MKLP1 and does not cross-react with related proteins.
Form	Liquid

Purification	Protein A purification
Isotype	IgG
Recommend Usage	Immunocytochemistry (1:50-1:200) Immunofluorescence (1:50-1:200) Western Blot (1:1000-1:5000) The optimal working dilution should be determined by the end user.
Storage Buffer	In PBS, pH7.2 (50% glycerol and 0.02% sodium azide)
Storage Instruction	Store at 4°C short term. Aliquot and store at -20°C long term. Avoid freeze-thaw cycles.
Note	This product contains sodium azide: a POISONOUS AND HAZARDOUS SUBSTANCE which should be handled by trained staff only.

Applications

- Western Blot (Cell lysate)

Western blot analysis of Lane1:A549 whole cell lysate Lane2:Hela whole cell lysate with KIF23 recombinant monoclonal antibody (Cat # RAB02740) at 1:1000 dilution.

- Immunocytochemistry

Immunocytochemical staining of HeLa cells using KIF23 recombinant monoclonal antibody (Cat # RAB02740)(green). The nuclear counter stain is DAPI (blue). Cells were fixed in paraformaldehyde, permeabilised with 0.25% Triton *100/PBS.

- Immunofluorescence

Gene Info — KIF23

Entrez GeneID	9493
Protein Accession#	Q02241
Gene Name	KIF23
Gene Alias	CHO1, KNSL5, MKLP-1, MKLP1
Gene Description	kinesin family member 23
Omim ID	605064
Gene Ontology	Hyperlink

Gene Summary

The protein encoded by this gene is a member of kinesin-like protein family. This family includes microtubule-dependent molecular motors that transport organelles within cells and move chromosomes during cell division. This protein has been shown to cross-bridge antiparallel microtubules and drive microtubule movement in vitro. Alternate splicing of this gene results in two transcript variants encoding two different isoforms. [provided by RefSeq]

Other Designations

kinesin-like 5 (mitotic kinesin-like protein 1)|mitotic kinesin-like 1